

EDI

Message Implementation Guidelines



Te Mana Arai o Aotearoa

for

CUSCAR

Electronic Cargo Information

Version 5.1

December 2006

C O N T E N T S

1. Introduction	3
2. How to Use the Manual	4
2.1 What is EDI ?	4
2.2 Terminology	5
2.3 Structure of Manual	9
2.4 EDI Syntax	10
2.5 Valid Character Set	11
3. Customs cargo report Message (CUSCAR)	12
3.1 Overview	12
3.2 Message Structure Diagram	14
3.3 Segment Table	16
3.4 Segment Definitions	20
3.5 Data Mapping Matrix	58
4. Customs Response Message (CUSRES)	61
4.1 Overview	61
4.2 Message Structure Diagram	65
4.3 Segment Table	67
4.4 Segment Definitions	71
4.5 Data Mapping Matrix	92
4.6 Delivery Order Layouts	93
5. Code Lists as Used by NZCS	96
6. Example Syntax	106
6.1 Customs Cargo Report (CUSCAR)	106
6.2 Application Responses (CUSRES)	116

****** This version contains Addendums 1 thru 15 ******

1. INTRODUCTION

This document is a product of an electronic commerce improvement programme, which was started by the implementation of the Customs Modernisation Project in July 1997. It defines the requirements of the New Zealand Customs Service (NZCS) for clients to carry out their regulatory cargo reporting with Customs.

Commonly referred to as 'EDI Message Implementation Guidelines', the document is traditionally aimed towards software developers, as a manual for creating EDI messages. The manual provides all of the necessary information to send electronic cargo reports to Customs, as well as the receipt of responses. The data required is specifically designed for the processing of air and sea manifests. The term used by Customs for this design is 'Electronic Cargo Information (ECI)'. Although NZCS will do everything possible to make your development easier, they are not obliged to assist in the development of client applications.

The specifications within this manual conform to the international standards of United Nations Electronic Data Interchange for Administration, Commerce and Trade (UN/EDIFACT) for Electronic Data Interchange (EDI). An electronic message, whether it is an original declaration or an adjustment, is carried out using the Customs Cargo Report, known as CUSCAR. Responses to these messages are in the form of a list of consignments, held, in error or, in some cases, written-off. These use the Customs Response message, known as CUSRES.

The New Zealand Customs Service cannot be held responsible for any errors, defects, or omissions contained herein and disclaims any liability in respect of the information in this document.

2. HOW TO USE THE MANUAL

2.1 *What is EDI ?*

Before embarking on any EDI development it is useful to understand what the benefits are to your organisation. The CusMod system provides a means of facilitating regulatory reporting without the need for paper-based systems.

There are many definitions for EDI, including an official one. However, they all say the same thing in different ways and that is that EDI is used to exchange information between computer systems. The key to the successful use of EDI is for the two parties, called trading partners, to agree on both the common information requirements and the standards for this information. This agreement process inevitably means change on both sides and, hence, could be a rather long process. Fortunately, the specifications within this manual are the straightforward implementation of government regulations and, as such, have been designed by one side of the trading partner relationship.

So the problems organisations might experience with EDI are not usually technical, as some would expect, but business related. Once common requirements have been agreed between trading partners, the rest is usually easy. An EDI message is an electronic document and, because EDI is being widely used around the world, there is usually an EDI message to meet almost any business requirement. Then it is just a case of fitting your information into the message structure, known as 'data mapping'. All that remains is the technical aspects of linking your trading partner's system with your own.

These specifications, therefore, have been designed using internationally agreed message structures for Customs declarations and responses. The requirements of New Zealand Customs Service have been determined by the many business areas in conjunction with the regulations under the Customs & Excise Act 1996.

2.2 Terminology

Throughout the manual terminology will be used that you may not be too familiar with. In order to make the task of understanding the manual easier, listed below are simple definitions of the common EDI terminology.

Directory

A EDI directory is published every 6 months in the form of versions. The version name of the directory is named by a 4 character mnemonic code made up of the year and part of year (identified by A or B). For example, the specifications within this manual conform to the directory approved by the United Nations in the first half of 1998 with a directory mnemonic code of D98A.

Each directory contains sub-directories for messages, segments, composites and data elements, all of which may change with directory versions. However, since a directory version is permanent, there is no need to update computer applications when a specific directory has been adopted.

Note that directory versions are available from Standards New Zealand.

Interchange

An interchange is a group of messages that are sent in one transmission. This means that it is possible to have more than one message within an interchange. However, for the CusMod system, they must be all of the same kind (e.g. all CUSCAR). Therefore, it is also possible to have a mixture of cargo reports and adjustments within the same interchange. However, the only rule is that an original and its adjustments cannot be sent within the same interchange.

Message

A message can be best described as a business transaction. Therefore, where appropriate, a message is often referred to as a transaction rather than a message. For example, a transaction could be an original cargo report, a new consignment, a change to a consignment, a cancellation of a consignment and so on.

A full list of messages can be seen in a sub-directory within all directory versions, called the message directory. Each message has its own description and structure, which may differ by directory version. The CUSCAR and CUSRES messages are two examples of these.

Segment

A segment is uniquely identified by a 3 character mnemonic tag, which is used as a reference to a common group of business information. Usually this will mean one segment contains one item of business data (i.e. field or attribute). For example, Port of Loading and Port of Discharge are locations. So the segment for location is used, called LOC. There are, however, segments that include more than one item of business data. For example Voyage No., Transport Mode and Craft Name are all classified as transport details included in the TDT segment.

Whilst a message has a standard structure of segments, there is also a separate sub-directory for segments within directory versions, known as the segment directory. Each segment has its own description and structure, which may differ by directory version.

Service Segment

A service segment is a segment that contains non-business related data. These segments usually encompass interchanges and messages, in the form of headers and trailers. For example the UNB and UNZ service segments are header and trailers for an interchange and the UNH and UNT segments are headers and trailers for a message.

Segment Group

A segment group is a collection of segments that are related within a message structure. An example would be a group of segments for a goods item within a specific consignment. Whilst the consignment itself has several segments to specify data relating to its level, it will also have a segment group for every goods item related to it.

Composite Element

A composite element is a lower level of detail to identify business data within a segment. It is normally used when a data item requires additional information. Each composite element has a unique code identifying it. A composite element could be used, for example, when a data item is in the form of a code and it requires a type qualifier and also the organisation responsible for its maintenance. In this case a group of data elements would be used to make a composite element.

Whilst a segment may or may not include composite elements in its structure, there is also a separate sub-directory for composite elements within directory versions, known as the composite data element directory. Each composite element has its own description and structure, which may differ with directory version.

Data Element

A data element is the lowest level within the EDI structure for holding data. Each data element has a unique code identifying it. A data element can exist as a stand-alone element or as a sub-element within a composite element.

There is also a separate sub-directory for data elements within directory versions, known as the data element directory. Like many other sub-directories, the data element sub-directory contains descriptions and various other information. In addition, some data elements also have associated code lists, which are published by organisations such as the International Standards Organisation (ISO). However, the United Nations also has its own code lists and, in addition, it is often possible for a trading partner to use their own.

Note that these specifications have their own associated restricted list of codes. Where possible these are based on international standards. However, some of them have been created and will be maintained by the NZCS. A full list of all codes used within these specifications are listed at the end of this manual.

Format

Various tables are headed by a title of 'Format'. The format is used to describe the official format requirements within the D98A directory. There are always 2 aspects to this. The first is a one character mnemonic (shown in brackets) identifying whether a group, segment or element is mandatory (M), conditional (C) or optional (O). If heading a Segment Table, the second aspect is the maximum number of instances allowed for the group, segment or element. For example, 'C 9' would mean up to 9 conditional usages allowed. If heading a Segment Definition table, the second aspect is the valid size of the of the data element. These are represented as follows ;-

a3	3 alphabetic characters, fixed length
n6	6 numeric characters (numbers), fixed length
an5	5 alphanumeric characters, fixed length
a..6	up to 6 alphabetic characters
an..35	up to 35 alphanumeric characters
n..9	up to 9 numeric characters (number)

Usage

In a similar way to 'Format', columns headed by 'Usage' is used to describe the NZCS use of the standard format. Likewise there are 2 aspects to this. First of all there is a one character mnemonic (shown in brackets) identifying whether a group, segment or element is required (R), dependent (D), optional (O) or not required (X). The other aspect is the maximum number of instances allowed by NZCS.

Value

The 'Value' column is used within Segment Definition tables to show the NZCS use of data element format. If used by NZCS, this column will contain either the valid size (see Format) where the data is user defined or the value (or range of values) that are mandatory for the data element.

Where applicable, to make things easier, numeric values with decimal places are also represented by ;-

n..10.n2 up to 10 numeric characters (numbers) plus 2 decimal places
n3.n2 6 numeric characters (numbers), fixed length, plus 2 decimal places

Meaning

The 'Meaning' column is used within the Segment Definition tables to identify the term used by NZCS, which may be slightly different terminology to the name describing the data element. It may also contain 'NOT USED', when the data element is not expected in any transmission to/from NZCS.

2.3 *Structure of Manual*

The manual is divided into eight main sections as follows ;-

- A contents page.
- An introduction.
- General information on how to use the manual (i.e. this section).
- The Customs Declaration (CUSCAR) message specifications.
- The Customs Response (CUSRES) message specifications.
- The Code Lists as used by NZCS.
- Example Syntax

Each of the sections containing message specifications have similar structures. First of all there is an overview of the message. A diagram then provides an overview of how the full official message is structured showing its sub-structure in the form of groups and segments. This diagram then points to a segment table. The segment table contains the official uses of each segment on the left hand side and NZCS's use on the right hand side.

Following the segment table, each segment used by NZCS is defined in detail, segment by segment. In addition, within each of these segment definitions, the segment structure is further defined by composite and data elements. The rules for the use of all segments and elements are also explained in detail.

At the conclusion of each section, there may also be additional information specific to the message. Common to all sections, the manual concludes with a summary of all codes used within the manual in the form of a code list. This is immediately followed by the final section providing example syntax of the various types of interchange.

2.4 EDI Syntax

Constructing an EDI message is relatively easy, as there are basic syntax rules to follow. However, before determining when to use a segment, you must first decide whether the segment is required for transaction type (e.g. original, cancel ECI etc.). This is done by carefully reading the 'Segment Rules' within each segment definition. If a segment is required, the syntax can then be constructed. When constructing segment syntax, be careful to read the 'Element Rules'. These rules may often result in different syntax for the same segment.

The UNA service segment, defined at the beginning of each message specification, shows the valid syntax delimiters. These delimiters are used to separate segment tags (+), composite elements (+), data elements (+) and sub-elements within composite elements (:). There is also a delimiter to indicate the end of a segment (!). This becomes more clear within each segment definition, as examples are included there.

When all of the rules have been followed, you should end up with a transaction in the form of a group segments starting with a UNH and ending in a UNT segment. Whether or not there is one or more transaction to be transmitted, the whole interchange should start with a UNA and UNB, ending with a UNZ segment.

The structure of the final transmission would typically look like this :-

```
UNA  Segment Delimiters
UNB  Interchange Header

      UNH  Message Header 1
           User Data Segments
      UNT  Message Trailer 1

      UNH  Message Header 2
           User Data Segments
      UNT  Message Trailer 2

UNZ  Interchange Trailer
```

2.5 Valid Character Set

The character set used by NZCS is the ISO 646 Level A character set. The following valid characters are allowed within data being transmitted to/from NZCS :-

Letters, upper case	A to Z
Numerals	0 to 9
Space character	
Full stop	.
Comma	,
Hyphen/minus sign	-
Opening parentheses	(
Closing parentheses)
Oblique stroke (slash)	/(except in "Client Reference No" in BGM segment)
Equals sign	=
Exclamation mark	!
Quotation mark	"
Percentage sign	%
Ampersand	&
Asterisk	*
Semi-colon	;
Less-than sign	<
Greater-than sign	>

Reserved for segment syntax separators :

Apostrophe	'	segment terminator
Plus sign	+	segment tag and data element separator
Colon	:	component data element separator
Question mark	?	release character
Tilde	~	used by NZCS

3. CUSTOMS CARGO REPORT MESSAGE (CUSCAR)

3.1 Overview

The specifications within this section are for the Customs Cargo Report message, known as CUSCAR.

The Customs Cargo Report is primarily used by Shipping Companies and Airlines to report full details of cargo carried on vessels and aircraft arriving or departing New Zealand.

Importers and Exporters may also use it to obtain Customs clearance ("write-off") of low value consignments for both import and export. At the time of publication low value consignment limits were set at \$NZ400 for Imports and \$NZ1000 for Exports. These limits apply to both Seafreight and Airfreight.

Consolidators can also use it for the purpose of making a Ministry of Agriculture and Forestry (MAF) Quarantine Declaration for Imported Containers.

A batch of CUSCAR messages may be transmitted within an interchange. A CUSCAR message, hereafter referred to as a transaction, can be one of 6 types, as follows :-

- Cancel ECI
- Add Consignment
- Cancel Consignment
- Original
- Replace Header Details
- Replace Consignment

An Original transaction would, typically, consist of the structure similar to that below. A complete data mapping matrix of the segments required is provided later in this section.

Start of Interchange

Start of Message 1

Header Information

Transport Details

Container Information

Consignment Information

Goods Item Detail Line Information

End of Message 1

Start of Message 2

(as above)

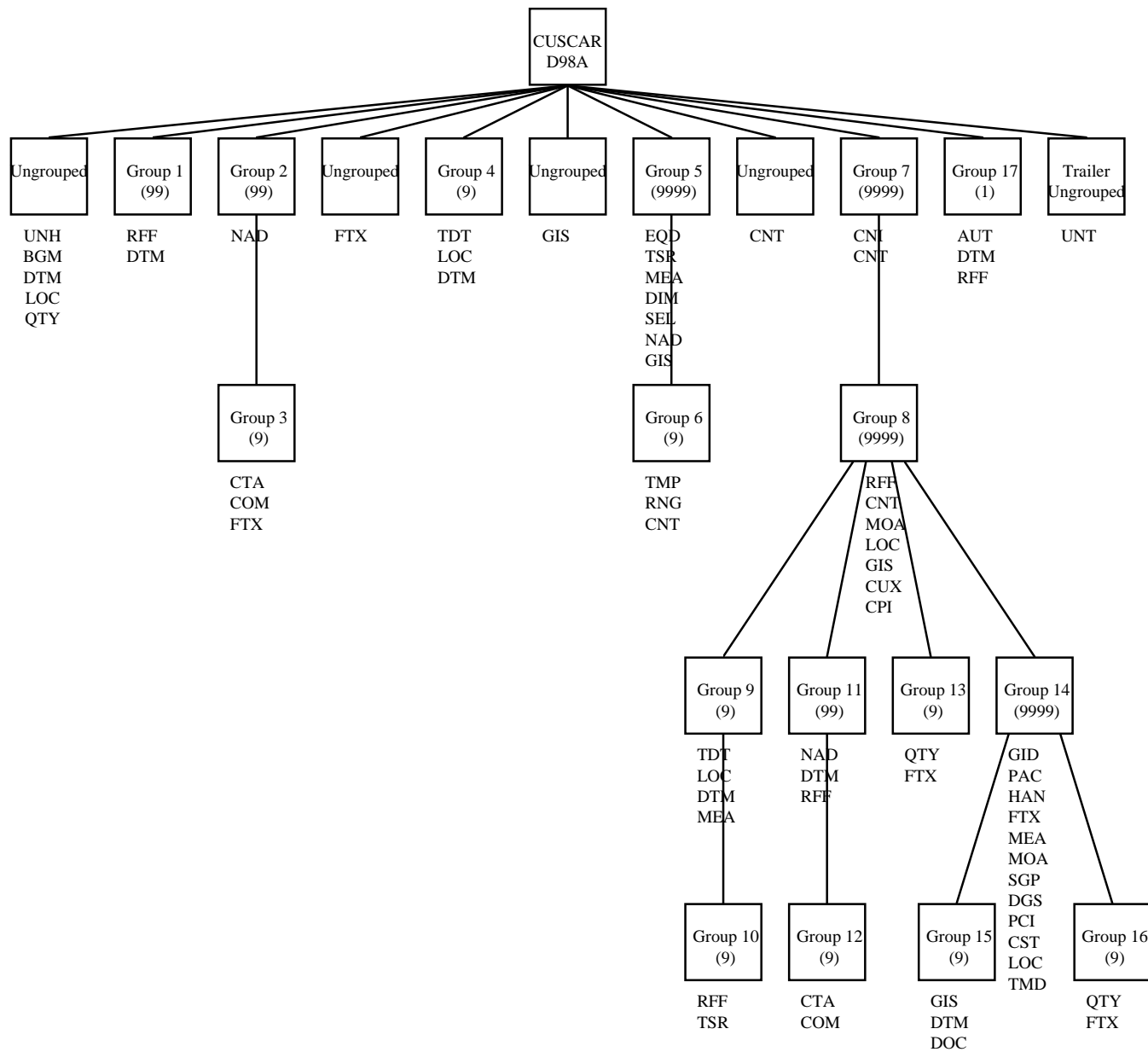
End of Message 2

End of Interchange

The following pages provide detailed specifications for the CUSCAR message. These consist of a segment table, the message structure, business/application rules and a data mapping summary.

3.2 Message Structure Diagram

The following page show the full UN/EDIFACT message structure for the Customs Declaration (CUSCAR) message as defined by the D98A directory.



3.3 *Segment Table*

The following segment table provides the full UN/EDIFACT structure complete with all groups and segments as they are defined in directory D98A of the standard. The table has also been sectionalised in such a way to provide continuity of terminology throughout the rest of the specifications. The left hand side of the table contains the UN/EDIFACT terms, including the segment position, tag or group name and format (i.e. usage requirements and maximum number of occurrences). The right hand side of the table contains the terms and requirements of New Zealand Customs Service. This includes a maximum use of the segment and also which data items the segments are used to define, if used at all.

CUSCAR		SEGMENT TABLE				D98A
Segment Position, Tag (or group no.) and Name		Format	Max.	NZCS Usage		
Start of Interchange						
	UNA	Service String Advice	M 1	1	Segment Delimiters	
	UNB	Interchange Header	M 1	1	Trading Partner Code, Transmission Date & Time, Interchange Reference	
Start of Message						
0010	UNH	Message header	M 1	1	Transaction Number, ECI Number	
Header Information						
0020	BGM	Beginning of message	M 1	1	Senders Reference Number, Transaction Type	
0030	DTM	Date/time/period	C 9		NOT USED	
0040	LOC	Place/location identification	C 9		NOT USED	
0050	QTY	Quantity	C 9		NOT USED	
0060	SG1	RFF-DTM	C 99			
0070	RFF	Reference	M 1		NOT USED	
0080	DTM	Date/time/period	C 9		NOT USED	
Carrier & Consolidator Information						
0090	SG2	NAD-SG3	C 99	2		
0100	NAD	Name and address	M 1	1	Carrier Name Consolidator Name	
0110	SG3	CTA-COM	C 9			
0120	CTA	Contact information	M 1		NOT USED	
0130	COM	Communication contact	C 9		NOT USED	
Transaction Remarks						
0140	FTX	Free text	C 9	1	Remarks	
Transport Details						
0150	SG4	TDT-LOC-DTM	C 9	1		
0160	TDT	Details of transport	M 1	1	Voyage No, Transport Mode, Flight No. or Craft Name	
0170	LOC	Place/location identification	C 99	1	Port of Arrival/Departure	
0180	DTM	Date/time/period	C 99	1	Date of Arrival/Departure	
0190	GIS	General indicator	C 9	1	ECI Type Full/Part Manifest Indicator	
Container List						
0200	SG5	EQD-TSR-MEA-DIM-SEL-NAD-GIS-SG6	C 9999	9999		
0210	EQD	Equipment details	M 1	1	Container Number, Container Status, Container Size/Type Code	
0220	TSR	Transport service requirements	C 9		NOT USED	
0230	MEA	Measurements	C 9		NOT USED	
0240	DIM	Dimensions	C 9		NOT USED	

CUSCAR		SEGMENT TABLE				D98A
Segment Position, Tag (or group no.) and Name			Format	Max.	NZCS Usage	
0250	SEL	Seal number	C 9		NOT USED	
0260	NAD	Name and address	C 9		NOT USED	
0270	GIS	General indicator	C 9	1	Attached Equipment Indicator	
				1	Quarantine Code	
				1	Prohibited Packaging Indicator	
0280	SG6	TMP-RNG	C 9			
0290	TMP	Temperature	M 1		NOT USED	
0300	RNG	Range details	C 1		NOT USED	
Control Totals						
0310	CNT	Control total	C 9	2	Total Consignments Total Containers	
Consignment Information						
0320	SG7	CNI-CNT-SG8	C 9999	9999		
0330	CNI	Consignment information	M 1	1	Consignment Number	
0340	CNT	Control total	C 9		NOT USED	
0350	SG8	RFF-CNT-MOA-LOC-GIS-CUX-CPI	C 9999	1		
0360	RFF	Reference	M 1	1	Bill Number	
0370	CNT	Control total	C 9		NOT USED	
0380	MOA	Monetary amount	C 9		NOT USED	
0390	LOC	Place/location identification	C 99	6	Port of Loading Port of Discharge Country of Origin Port of Delivery Place of (Final) Delivery Place of Transshipment	
0400	GIS	General indicator	C 9		NOT USED	
0410	CUX	Currencies	C 9		NOT USED	
0420	CPI	Charge payment instructions	C 9		NOT USED	
0430	SG9	TDT-LOC-DTM-MEA-SG10	C 9			
0440	TDT	Details of transport	M 1		NOT USED	
0450	LOC	Place/location identification	C 9		NOT USED	
0460	DTM	Date/time/period	C 9		NOT USED	
0470	MEA	Measurements	C 9		NOT USED	
0480	SG10	RFF-TSR	C 9			
0490	RFF	Reference	M 1		NOT USED	
0500	TSR	Transport service requirements	C 9		NOT USED	
Consignor & Consignee Information						
0510	SG11	NAD-DTM-RFF-SG12	C 99	3		
0520	NAD	Name and address	M 1	1	Consignee Name & Address Consignor Name & Address Contact Party Name & Address	
0530	DTM	Date/time/period	C 9		NOT USED	
0540	RFF	Reference	C 9		NOT USED	
0550	SG12	CTA-COM	C 9			
0560	CTA	Contact information	M 1		NOT USED	

CUSCAR		SEGMENT TABLE				D98A
Segment Position, Tag (or group no.) and Name			Format	Max.	NZCS Usage	
0570	COM	Communication contact	C 9		NOT USED	
0580	SG13	QTY-FTX	C 9			
0590	QTY	Quantity	M 1		NOT USED	
0600	FTX	Free text	C 9		NOT USED	
Goods Item Detail Information						
0610	SG14	GID-PAC-HAN-FTX-MEA-MOA-SGP-DGS-PCI-CST-SG15-SG16	M 9999	1000		
0620	GID	Goods item details	M 1	1	Goods Number Number of Packages Type of Package - Level 1 Type of Package - Level 2 Type of Package - Level 3	
0630	PAC	Package	C 9		NOT USED	
0640	HAN	Handling instructions	C 9		NOT USED	
0650	FTX	Free text	C 99	1	Goods Description Vehicle Identification Number	
0660	MEA	Measurements	C 99	1	Gross Weight (item level)	
0670	MOA	Monetary amount	C 9	1	Value in Currency	
0680	SGP	Split goods placement	C 99	1	Container Number	
0690	DGS	Dangerous goods	C 9	1	Dangerous Goods Code, Dangerous Goods Number, Flashpoint	
0700	PCI	Package identification	C 9		NOT USED	
0710	CST	Customs status of goods	C 1		NOT USED	
0720	LOC	Place/location identification	C 9	1	Place of Origin Container Pack Location	
0730	TMD	Transport movement details	C 9		NOT USED	
0740	SG15	GIS-DTM-DOC	C 9			
0750	GIS	General indicator	M 1		NOT USED	
0760	DTM	Date/time/period	C 9		NOT USED	
0770	DOC	Document/message details	C 9		NOT USED	
0780	SG16	QTY-FTX	C 9			
0790	QTY	Quantity	M 1		NOT USED	
0800	FTX	Free text	C 1		NOT USED	
0810	SG17	AUT-DTM-RFF	C 1			
0820	AUT	Authentication result	M 1		NOT USED	
0830	DTM	Date/time/period	C 9		NOT USED	
0840	RFF	Reference	C 9		NOT USED	
End of Message						
0850	UNT	Message trailer	M 1	1	Total Number of Segments, Transaction Number	
End of Interchange						
	UNZ	Interchange Trailer	M 1	1	Total Number of Messages, Interchange Reference	

3.4 *Segment Definitions*

The following pages show the segment definitions and detailed specifications as used by the New Zealand Customs Service.

A segment definition is where the lowest level of detail is defined. Each segment has its own table providing the full UN/EDIFACT segment structure, complete with composite and/or data elements. Every table is headed by the official segment title and functional description. The left hand side of the table contains the UN/EDIFACT terms, including composite or data element code, name and format (i.e. usage requirements and size). The right hand side of the table contains the sizes or fixed values (in bold where applicable) and the name of the data as referred to by the New Zealand Customs Service.

Following each segment definition table, a shaded area contains both segment and element rules, most of which will cause transactions to be rejected if not adhered to. The segment rules usually advise whether the associated data is required for the transaction type. The element rules describe the requirements for the data, especially where the data is variable or user defined. The types of rules here would normally be the format or, in many cases, where there is a dependency on data in other segments.

Also within the shaded areas, example syntax shows how the syntax will look when constructed. Finally, related response codes have also been listed. These are there to make it easier to understand the types of response codes that can result from the application. In some cases, the rules for response codes are not defined. This has been done intentionally, where the business rules may change more frequently than others and therefore the validation for them should not be 'hard coded' within your software.

CUSCAR	START OF INTERCHANGE	INTERCHANGE
---------------	-----------------------------	--------------------

UNA SERVICE STRING ADVICE

Function : To define the characters selected for use as delimiters and indicators in the rest of the interchange that follows:

Element Code and Name	Format	Value	Meaning	Usage
COMPONENT DATA ELEMENT SEPARATOR	M an..1	:		R
DATA ELEMENT SEPARATOR	M an..1	+		R
DECIMAL NOTATION	M an..1	.		R
RELEASE INDICATOR	M an..1	?		R
Reserved	M an..1	Space		R
SEGMENT TERMINATOR	M an..1	'		R

Segment Rules

- This segment will be mandatory for all interchanges.

Example Syntax

UNA:+.? '

CUSCAR	START OF INTERCHANGE	INTERCHANGE
---------------	-----------------------------	--------------------

UNB INTERCHANGE HEADER

Function : To start, identify and specify an interchange.

Element Code and Name		Format	Value	Meaning	Usage
S001	SYNTAX IDENTIFIER	M			R
0001	Syntax identifier	M a..4	UNOA	UN/ECE Level A	R
0002	Syntax version number	M n..1	2	Version Two	R
S002	INTERCHANGE SENDER	M			R
0004	Sender identification	M an..35	an9	Trading Partner Code	R
0007	Partner identification code qualifier	C an..4	ZZZ	Mutually Defined	R
0008	Address for reverse routing	C an..14		NOT USED	X
S003	INTERCHANGE RECIPIENT	M			R
0010	Recipient identification	M an..35	CUSMOD	NZCS System Id	R
0007	Partner identification code qualifier	C an..4	ZZZ	Mutually Defined	R
0014	Routing address	C an..14		NOT USED	X
S004	DATE/TIME OF PREPARATION	M			R
0017	Date of preparation	M n..6	n6	Date Format YYMMDD	R
0019	Time of preparation	M n..4	n4	Time Format HHMM	R
0020	INTERCHANGE CONTROL REFERENCE	M an..14	an..14	Interchange Reference	R
S005	RECIPIENTS REFERENCE PASSWORD	C			X
0022	Recipient's reference/password	M an..14		NOT USED	X
0025	Recipient's reference/password qualifier	C an..2		NOT USED	X
0026	APPLICATION REFERENCE	C an..14		NOT USED	X
0029	PROCESSING PRIORITY CODE	C a..1		NOT USED	X
0031	ACKNOWLEDGEMENT REQUEST	C n..1		NOT USED	X
0032	COMMUNICATIONS AGREEMENT ID	C an..35		NOT USED	X
0035	TEST INDICATOR	C n..1		NOT USED	X

Segment Rules

- This segment is mandatory for all interchanges.

Element Rules

- Data Element 0004 must contain the client/broker code with whom the trading partnership exists in the format of 8 digits plus check letter.
- Data Element 0017 must contain the date when the interchange was created.
- Data Element 0019 must contain the time when the interchange was created.
- Data Element 0020 should contain a unique reference to identify the interchange for tracking purposes.

Example Syntax

UNB+UNOA:2+nnnnnnnnn:ZZZ+CUSMOD:ZZZ+nnnnnn:nnnn+nnnnnnnnnnnnnn'

CUSCAR	START OF MESSAGE	MESSAGE
---------------	-------------------------	----------------

UNH MESSAGE HEADER

Function : To head, identify and specify a message.

Element Code and Name	Format	Value	Meaning	Usage
0062 MESSAGE REFERENCE NUMBER	M an..14	an..14	Transaction Number	R
S009 MESSAGE IDENTIFIER	M			R
0065 Message type identifier	M an..6	CUSCAR	Customs Cargo Report	R
0052 Message type version number	M an..3	D	Directory Version	R
0054 Message type release number	M an..3	98A	Release Number	R
0051 Controlling agency	M an..2	UN	Agency	R
0057 Association assigned Code	C an..6		NOT USED	X
0068 COMMON ACCESS REFERENCE	C an..35	n8	ECI Number	D
S010 STATUS OF THE TRANSFER	C		NOT USED	X
0070 Sequence message transfer number	M n..2		NOT USED	X
0073 First/last sequence message transfer indicator	C a..1		NOT USED	X

Segment Rules

- This segment is mandatory for all transaction types.

Element Rules

- Data Element 0062 must contain a unique sequential number identifying the transaction within your system.
- Data Element 0068 is only required when making adjustments to previously transmitted messages (see BGM segment that follows) and should contain the NZCS allocated 8 digit ECI number.

Note : This means that original cannot be adjusted until an acknowledgement of receipt (i.e. acceptance or rejection) of the original ECI has been received from NZCS.

Example Syntax

UNH+nnnnnnnnnnnnnn+CUSCAR:D:98A:UN' An original
 UNH+nnnnnnnnnnnnnn+CUSCAR:D:98A:UN+nnnnnnnn' An adjustment transaction

Related Response Codes

- 601 Transaction Number : Not specified or invalid
- 625 ECI Number : Not specified or invalid

CUSCAR	HEADER INFORMATION	HEADER
---------------	---------------------------	---------------

BGM BEGINNING OF MESSAGE

Function : To indicate the type and function of a message and to transmit the identifying number.

Element Code and Name		Format	Value	Meaning	Usage
C002	DOCUMENT/MESSAGE NAME	C			R
1001	Document/message name, coded	C an..3	785	ECI	R
1131	Code list qualifier	C an..3		NOT USED	X
3055	Code list responsible agency, coded	C an..3		NOT USED	X
1000	Document/message name	C an..35		NOT USED	X
C106	DOCUMENT/MESSAGE IDENTIFICATION	C			R
1004	Document/message number	C an..35	an..14	Senders Reference Number	R
1056	Version	C an..9		NOT USED	X
1060	Revision Number	C an..6		NOT USED	X
1225	MESSAGE FUNCTION, CODED	C an..3		Transaction Type :-	R
			1	Cancel ECI	
			2	Add Consignment	
			3	Cancel Consignment	
			9	Original	
			20	Replace Header Details	
			21	Replace Consignment	
4343	RESPONSE TYPE, CODED	C an..3		NOT USED	X

Segment Rules

- This segment is mandatory for all transaction types.

Element Rules

- Data Element 1004 should be a unique reference within your system identifying an ECI and should be the same on all subsequent adjustment transactions.
- Data Element 1225 is used to identify the type of transaction. The following rules apply :-

Transaction Type 1 should be used when cancelling an ECI.

Transaction Type 2 should be used when adding consignment(s) to an existing ECI.

Transaction Type 3 should be used when cancelling consignment(s) from an existing ECI.

Transaction Type 9 should be used when transmitting the original ECI.

Transaction Type 20 should be used when changing header and container list information within an existing ECI.

Transaction Type 21 should be used when changing consignment(s) details only within an existing ECI.

Note: Data Element 1004 cannot contain the oblique stroke (slash) (/) character.

Example Syntax

BGM+785+nnnnnnnnnnnnnn+9' An original ECI

Related Response Codes

- 602 Class : Not specified or invalid
- 487 Senders Reference Number : Duplicates not allowed
- 558 Senders Reference Number : Not specified
- 618 Senders Reference Number : Not the same as that quoted on original entry
- 604 Transaction Type : Not specified or invalid
- 626 Transaction Type : No original ECI to adjust
- 627 Transaction Type : ECI already cancelled
- 628 Transaction Type : ECI only has one consignment - cannot cancel consignment

CUSCAR	CARRIER AND CONSOLIDATOR INFORMATION	GROUP 2
---------------	---	----------------

NAD NAME AND ADDRESS

Function : To specify the name/address and their related function, either by CO82 only and/or unstructured by CO58 or structured by CO80 thru 3207.

Element Code and Name	Format	Value	Meaning	Usage
3035 PARTY QUALIFIER	M an..3	CA CS	Carrier Consolidator	R
C082 PARTY IDENTIFICATION DETAILS	C			X
3039 Party id identification	M an..35		NOT USED	R
1131 Code list qualifier	C an..3		NOT USED	R
3055 Code list responsible agency, coded	C an..3		NOT USED	R
C058 NAME AND ADDRESS	C			D
3124 Name and address line	M an..35	an..35	Carrier/Consolidator Name	R
3124 Name and address line	C an..35		NOT USED	X
3124 Name and address line	C an..35		NOT USED	X
3124 Name and address line	C an..35		NOT USED	X
3124 Name and address line	C an..35		NOT USED	X
C080 PARTY NAME	C			X
3036 Party name	M an..35		NOT USED	X
3036 Party name	C an..35		NOT USED	X
3036 Party name	C an..35		NOT USED	X
3036 Party name	C an..35		NOT USED	X
3036 Party name	C an..35		NOT USED	X
3045 Party name format, coded	C an..3		NOT USED	X
C059 STREET	C			X
3042 Street and number/P.O. Box	M an..35		NOT USED	X
3042 Street and number/P.O. Box	C an..35		NOT USED	X
3042 Street and number/P.O. Box	C an..35		NOT USED	X
3042 Street and number/P.O. Box	C an..35		NOT USED	X
3164 CITY NAME	C an..35		NOT USED	X
3229 COUNTRY SUB-ENTITY IDENTIFICATION	C an..9		NOT USED	X
3251 POSTCODE IDENTIFICATION	C an..9		NOT USED	X
3207 COUNTRY, CODED	C an..3		NOT USED	X

Segment Rules

- A separate segment is mandatory for Carrier Name for transaction types 9 (Original) and 20 (Replace Header Details).
- A separate segment is dependent for Consolidator Name for transaction types 9 (Original) and 20 (Replace Header Details).
Consolidator Name : Used when the Consolidator Name is different from the Carrier Name.

Element Rules

- Data Element 3035 must contain the code relating to the name specified.
- Data Element 3124 is mandatory for all uses of this segment.

Example Syntax

NAD+CA++nnn...nnn (35)' Carrier Name
NAD+CS++nnn...nnn(35)' Consolidator Name

Related Response Codes

148 Carrier Name : Not specified or invalid

CUSCAR	TRANSACTION REMARKS	HEADER
---------------	----------------------------	---------------

FTX FREE TEXT

Function To provide free form or coded text information.

Element Code and Name		Format	Value	Meaning	Usage
4451	TEXT SUBJECT QUALIFIER	M an..3	AAI	General Information	R
4453	TEXT FUNCTION, CODED	C an..3		NOT USED	X
C107	TEXT REFERENCE	C		NOT USED	X
4441	Free text, coded	M an..17		NOT USED	X
1131	Code list qualifier	C an..3		NOT USED	X
3055	Code list responsible agency, coded	C an..3		NOT USED	X
C108	TEXT LITERAL	C			R
4440	Free text	M an..70	an..70	Remarks	R
4440	Free text	C an..70	an..70	“	O
4440	Free text	C an..70	an..70	“	O
4440	Free text	C an..70	an..40	“	O
4440	Free text	C an..70		NOT USED	X
3453	LANGUAGE, CODED	C an..3		NOT USED	X

Segment Rules

- This segment is optional for all transaction types.

Element Rules

- At least one instance of Data Element 4440 is required, with the remaining being optional (i.e. up to 250 characters).

Example Syntax

FTX+AAI+++nnn...nnn (70):nnn...nnn (70)' Two lines of remarks

CUSCAR	TRANSPORT DETAILS	GROUP 4
---------------	--------------------------	----------------

TDT DETAILS OF TRANSPORT

Function : **To specify the transport details such as mode of transport, means of transport, its conveyance reference number and the identification of the means of transport. The segment may be pointed to by the TPL segment.**

Element Code and Name	Format	Value	Meaning	Usage
8051 TRANSPORT STAGE QUALIFIER	M an..3	20	Main Carriage Transport	R
8028 CONVEYANCE REFERENCE NUMBER	C an..17	an..8	Voyage Number	D
C220 MODE OF TRANSPORT	C			R
8067 Mode of transport, coded	C an..3	1 4	Transport Mode ;- Sea Air (UN/ECE Rec. 19)	R
8066 Mode of transport	C an..17		NOT USED	X
C228 TRANSPORT MEANS	C		NOT USED	X
8179 Type of means of transport identification	C an..8		NOT USED	X
8178 Type of means of transport	C an..17		NOT USED	X
C040 CARRIER	C		NOT USED	X
3127 Carrier identification	C an..17		NOT USED	X
1131 Code list qualifier	C an..3		NOT USED	X
3055 Code list responsible agency, coded	C an..3		NOT USED	X
3128 Carrier name	C an..35		NOT USED	X
8101 TRANSIT DIRECTION, CODED	C an..3		NOT USED	X
C401 EXCESS TRANSPORTATION INFORMATION	C		NOT USED	X
8457 Excess transportation reason, coded	M an..3		NOT USED	X
8459 Excess transportation responsibility, coded	M an..3		NOT USED	X
7130 Customer authorisation number	C an..17		NOT USED	X
C222 TRANSPORT IDENTIFICATION	C			D
8213 Id of means of transport identification	C an..9		NOT USED	X
1131 Code list qualifier	C an..3		NOT USED	X
3055 Code list responsible agency, coded	C an..3		NOT USED	X
8212 Id of the means of transport	C an..35	an..7 an..30	Flight No. Craft Name	R
8453 Nationality of means of transport, coded	C an..3		NOT USED	X
8281 TRANSPORT OWNERSHIP, CODED	C an..3		NOT USED	X

Segment Rules

- This segment is mandatory for transaction types 9 (Original) and 20 (Replace Header Details).

Element Rules

- Data Element 8028 is required for Voyage No. on sea freight only.
- Data Element 8212, should be Craft Name for sea freight and Flight No. for air freight.
- Note: Craft names and flight numbers must conform to the list published by NZ Customs. A full list of valid craft names and flight numbers is available at:
<http://www.customs.govt.nz/exporters/customs+requirements/craft+name+and+flight+number.asp>

Example Syntax

TDT+20+nnnnnnnn+1+++++::nnnnnnnnnnnnnnnn'	Sea Freight Details
TDT+20++4+++++::nnnnnnn'	Air Freight Details

Related Response Codes

- | | |
|-----|---|
| 112 | Voyage Number : Not specified |
| 462 | Voyage Number : Not required for air |
| 103 | Transport Mode : Not specified or invalid |
| 101 | Flight No. : Not specified |
| 102 | Craft Name : Not specified |

CUSCAR	TRANSPORT DETAILS	GROUP 4
---------------	--------------------------	----------------

LOC PLACE/LOCATION IDENTIFICATION

Function : To identify a country/place/location/related location one/related location two.

Element Code and Name		Format	Value	Meaning	Usage
3227	PLACE/LOCATION QUALIFIER	M an..3	22	Port of Arrival/Departure	R
C517	LOCATION IDENTIFICATION	C			R
3225	Place/location identification	C an..25	an5	UN/LOCODE (UN/ECE Rec. 16)	R
1131	Code list qualifier	C an..3		NOT USED	X
3055	Code list responsible agency, coded	C an..3		NOT USED	X
3224	Place/location	C an..70		NOT USED	X
C519	RELATED LOCATION ONE IDENTIFICATION	C		NOT USED	X
3223	Related place/location one identification	C an..25		NOT USED	X
1131	Code list qualifier	C an..3		NOT USED	X
3055	Code list responsible agency, coded	C an..3		NOT USED	X
3222	Related place/location one	C an..70		NOT USED	X
C553	RELATED LOCATION TWO IDENTIFICATION	C		NOT USED	X
3233	Related place/location two identification	C an..25		NOT USED	X
1131	Code list qualifier	C an..3		NOT USED	X
3055	Code list responsible agency, coded	C an..3		NOT USED	X
3232	Related place/location two	C an..70		NOT USED	X
5479	RELATION, CODED	C an..3		NOT USED	X

Segment Rules

- This segment is mandatory for transaction types 9 (Original) and 20 (Replace Header Details).

Element Rules

- Data Element 3225 should contain a UN/LOCODE Port Code to identify the Port of Arrival (Import) or Departure (Export).

Example Syntax

LOC+22+nnnnn' Port of Arrival (Import) or Departure (Export).

Related Response Codes

- 491 Port of Arrival/Departure : Not specified or invalid
- 492 Port of Arrival/Departure : Not current

CUSCAR	TRANSPORT DETAILS	GROUP 4
---------------	--------------------------	----------------

DTM DATE/TIME/PERIOD

Function : To specify date, and/or time, or period.

Element Code and Name	Format	Value	Meaning	Usage
C507 DATE/TIME/PERIOD	M			R
2005 Date/time/period qualifier	M an..3	132	Date of Arrival/Departure	R
2380 Date/time/period	C an..35	n..8	Date	R
2379 Date/time/period format qualifier	C an..3	102	CCYYMMDD for Dates	R

Segment Rules

- This segment is mandatory for transaction types 9 (Original) and 20 (Replace Header Details).

Element Rules

- Data Element 2380 should contain the Date of Arrival (Import) or Departure (Export), in the format CCYYMMDD.

Example Syntax

- DTM+132:nnnnnnnn:102' Date of Arrival (Import) or Departure (Export).

Related Response Codes

522 Date of Arrival/Departure : Not specified or invalid

CUSCAR	TRANSPORT DETAILS	HEADER
---------------	--------------------------	---------------

GIS GENERAL INDICATOR

Function : **To transmit a processing indicator.**

Element Code and Name		Format	Value	Meaning	Usage
C529	PROCESSING INDICATOR	M			R
7365	Processing indicator, coded	M an..3	n2 a1	ECI Type Full/Part Manifest Indicator	R
1131	Code list qualifier	C an..3	105 109	ECI Type Full/Part Manifest Indicator	R
3055	Code list responsible agency, coded	C an..3	143	NZCS	R
7187	Process type identification	C an..17		NOT USED	X

Segment Rules

- A separate segment is mandatory to specify the ECI Type (Import or Export) for transaction types 9 (Original) and 20 (Replace Header Details).
- A separate segment is mandatory to specify whether the ECI information is a Full or Part manifest for transaction types 9 (Original) and 20 (Replace Header Details).

Element Rules

- When used for ECI Type, Data Element 7365 must contain a valid code (10-Import,40-Export) from the attached code list. Data Element 1131 must be 105 and Data Element 3055 must be 143.
- When used for Full/Part Manifest Indicator, Data Element 7365 must either 'Y' (full manifest) or 'N' (part manifest). Data Element 1131 must be 109 and Data Element 3055 must be 143.

Example Syntax

```
GIS+10:105:143'                    Import ECI
GIS+40:105:143'                    Export ECI
GIS+N:109:143'                    A part manifest
```

Related Response Codes

```
609     ECI Type : Not specified or invalid
650     Part Full Manifest Indicator : Not specified or invalid
```

CUSCAR	CONTAINER LIST	GROUP 5
---------------	-----------------------	----------------

EQD EQUIPMENT DETAILS

Function : **To identify a unit of equipment.**

Element Code and Name	Format	Value	Meaning	Usage
8053 EQUIPMENT QUALIFIER	M an..3	CN	Container	R
C237 EQUIPMENT IDENTIFICATION	C			
8260 Equipment identification number	C an..17	an..17	Container Number	R
1131 Code list qualifier	C an..3		NOT USED	
3055 Code list responsible agency, coded	C an..3		NOT USED	
3207 Country, coded	C an..3		NOT USED	
C224 EQUIPMENT SIZE AND TYPE	C			R
8155 Equipment size and type identification	C an..10	n..3	Container Size/Type Code	
1131 Code list qualifier	C an..3		NOT USED	
3055 Code list responsible agency, coded	C an..3		NOT USED	
8154 Equipment size and type	C an..35		NOT USED	
8077 EQUIPMENT SUPPLIER, CODED	C an..3		NOT USED	X
8249 EQUIPMENT STATUS, CODED	C an..3		NOT USED	X
8169 FULL/EMPTY INDICATOR, CODED	C an..3		Container Status ;-	R
		4	Empty	
		5	Full Load	
		7	Less than Container Load	
		8	Bulk Consignment	

Segment Rules

- This segment is dependent for transaction type 9 (Original).
Condition: Container list is required when containers are being used to transport goods within a consignment or being shipped empty to destinations.
- This segment is dependent for transaction type 20 (Replace Header Details).
Condition: Container list is required when container information within consignments changes.

Element Rules

- Data Element 8260 must contain a container number.
- Data Element 8155 must contain the coded value for the Container Size/Type of that container.
- Data Element 8169 must contain the coded value for the status of that container.

Example Syntax

EQD+CN+nnnnnnnnnnnnnnnn+23+++5' Full 40ft General Purpose Container Load

Related Response Codes

- 481 Container Number : Not specified
- 482 Container Status : Not specified or invalid
- 659 Container Size/Type Code : Not specified or invalid

CUSCAR	TRANSPORT DETAILS	GROUP 5
---------------	--------------------------	----------------

GIS GENERAL INDICATOR

Function : **To transmit a processing indicator.**

Element Code and Name		Format	Value	Meaning	Usage
C529	PROCESSING INDICATOR	M			R
7365	Processing indicator, coded	M	an..3	a1 a1 a1	R
1131	Code list qualifier	C	an..3	63 67 118	R
3055	Code list responsible agency, coded	C	an..3	143	R
7187	Process type identification	C	an..17	NOT USED	X

Segment Rules

- A separate segment is mandatory for Attached Equipment Indicator for transaction types 9 (Original) and 20 (Replace Header Details).
Note : The Attached Equipment Indicator should be used to specify whether there are any Reefer Generators attached either inside or outside. This includes empty containers.
- A separate segment is mandatory for Prohibited Packaging Indicator for transaction types 9 (Original) and 20 (Replace Header Details).
- A separate segment is dependent for Quarantine Code for transaction types 9 (Original) and 20 (Replace Header Details).
Condition : If the container has been cleaned or fumigated or both, then this indicator should be used.

Element Rules

- When used for Attached Equipment Indicator, Data Element 7365 will either contain ‘Y’ (equipment attached) or ‘N’ (no equipment attached). Data Element 1131 should be set to 63 and Data Element 3055 should be set to 143.
- When used for Prohibited Packaging Indicator, Data Element 7365 should contain ‘Y’ (prohibited packaging has been used) or ‘N’ (no prohibited packaging has been used). Data Element 1131 should be set to 67 and Data Element 3055 should be set to 143.
- When used for Quarantine Code, Data Element 7365 should contain the appropriate value from the associated code list. Data Element 1131 should be set to 118 and Data Element 3055 should be set to 143.

Example Syntax

GIS+Y:63:143' Equipment is attached.
 GIS+N:67:143' No prohibited packaging used.
 GIS+F:118:143' Container has been fumigated.

Related Response Codes

- 660 Attached Equipment Indicator : Must be ‘Y’ or ‘N’
- 661 Quarantine Code : Not specified or invalid
- 662 Prohibited Packaging Indicator : Must be ‘Y’ or ‘N’

CUSCAR	CONTROL TOTALS	HEADER
---------------	-----------------------	---------------

CNT CONTROL TOTAL

Function : To provide control total.

Element Code and Name	Format	Value	Meaning	Usage
C270 CONTROL	M			R
6069 Control qualifier	M an..3	10	Total Consignments	R
		16	Total Containers	
6066 Control value	M n..18	n..4	Total	R
6411 Measure unit qualifier	C an..3		NOT USED	X

Segment Rules

- A separate segment is mandatory for Total Consignments for transaction types 2 (Add Consignment), 3 (Cancel Consignment), 9 (Original) and 21 (Replace Consignment).
- A separate segment is dependent for Total Containers for transaction types 9 (Original) and 20 (Replace Header Details).

Condition: Separate segment is only required when container information has been recorded in EQD segment.

Element Rules

- The totals within this segment are control totals and therefore relate to the number of items within the message and not necessarily, in the case of adjustments, the ECI.
- Data Element 6066, when used for Total Consignments, should contain the number of consignments within the transaction.
- Data Element 6066, when used for Total Containers, should contain the number of containers within the transaction.

Example Syntax

CNT+10:nnnn' Total Consignments
 CNT+16:nnnn' Total Containers

Related Response Codes

524 Total Containers : The number of containers does not match total specified
 525 Total Consignments : The number of consignments received does not match total specified

CUSCAR	CONSIGNMENT INFORMATION	GROUP 7
---------------	--------------------------------	----------------

CNI CONSIGNMENT INFORMATION

Function : **To identify one consignment.**

Element Code and Name		Format	Value	Meaning	Usage
1490	CONSOLIDATION ITEM NUMBER	C	n..4	n..4	Consignment Number R
C503	DOCUMENT/MESSAGE DETAILS	C			NOT USED X
1004	Document/message number	C	an..35		NOT USED X
1373	Document/message status, coded	C	an..3		NOT USED X
1366	Document/message source	C	an..35		NOT USED X
3453	Language, coded	C	an..3		NOT USED X
1312	CONSIGNMENT LOAD SEQUENCE NUMBER	C	n..4		NOT USED X

Segment Rules

- This segment is mandatory for transaction types 2 (Add Consignment), 3 (Cancel Consignment), 9 (Original) and 21 (Replace Consignment).
Note : Consignment and Goods Item details are also required for empty containers.

Element Rules

- Data Element 1490 should contain a unique sequential number identifying a consignment.
Note : For transaction Type 2 (Add consignment) new consignment numbers should be a continuation of the existing consignment number series. Additionally, where consignments have been cancelled using Transaction Type 3 (Cancel Consignment) do not re-use the cancelled consignment numbers.

Example Syntax

CNI+nnnn' Consignment Item Number.

Related Response Codes

- 621 Consignment Number : Consignment does not exist - cannot be replaced
- 622 Consignment Number : Consignment does not exist - cannot be cancelled
- 623 Consignment Number : Consignment already exists
- 624 Consignment Number : Consignment already cancelled
- 695 ECI must contain at least one consignment and one goods item

CUSCAR	CONSIGNMENT INFORMATION	GROUP 8
---------------	--------------------------------	----------------

RFF REFERENCE

Function : **To specify a reference.**

Element Code and Name	Format	Value	Meaning	Usage
C506 REFERENCE	M			R
1153 Reference qualifier	M an..3	BM HWB MB	Bill of Lading House Waybill Master Bill	R
1154 Reference number	C an..35	an..17	Bill Number	R
1156 Line number	C an..6		NOT USED	X
4000 Reference version number	C an..35		NOT USED	X

Segment Rules

- This segment is mandatory for transaction types 2 (Add Consignment), 9 (Original) and 21 (Replace Consignment).

Element Rules

- Data Element 1154 should contain a valid bill number.
- For Airfreight use MB or HWB as appropriate. For Seafreight us BM.

Example Syntax

RFF+HWB:nnnnnnnnnnnnnnnn' House Waybill

Related Response Codes

- 186 Bill Type : Not specified or invalid
- 187 Bill Number : Not specified or invalid

CUSCAR	CONSIGNMENT INFORMATION	GROUP 8
---------------	--------------------------------	----------------

LOC PLACE/LOCATION IDENTIFICATION

Function : To identify a country/place/location/related location one/related location two.

Element Code and Name	Format	Value	Meaning	Usage
3227 PLACE/LOCATION QUALIFIER	M an..3	7 9 11 13 27 83	Port of Delivery Port of Loading Port of Discharge Place of Transhipment Country of Origin Place of (Final) Delivery	R
C517 LOCATION IDENTIFICATION	C			R
3225 Place/location identification	C an..25	an5 an2	UN/LOCODE Port or ISO 3166 Country Code (UN/ECE Rec. 3)	R
1131 Code list qualifier	C an..3		NOT USED	X
3055 Code list responsible agency, coded	C an..3		NOT USED	X
3224 Place/location	C an..70		NOT USED	X
C519 RELATED LOCATION ONE IDENTIFICATION	C		NOT USED	X
3223 Related place/location one identification	C an..25		NOT USED	X
1131 Code list qualifier	C an..3		NOT USED	X
3055 Code list responsible agency, coded	C an..3		NOT USED	X
3222 Related place/location one	C an..70		NOT USED	X
C553 RELATED LOCATION TWO IDENTIFICATION	C		NOT USED	X
3233 Related place/location two identification	C an..25		NOT USED	X
1131 Code list qualifier	C an..3		NOT USED	X
3055 Code list responsible agency, coded	C an..3		NOT USED	X
3232 Related place/location two	C an..70		NOT USED	X
5479 RELATION, CODED	C an..3		NOT USED	X

Segment Rules

- A separate segment is mandatory for Port of Loading and Port of Discharge for transaction types 2 (Add Consignment), 9 (Original) and 21 (Replace Consignment).
- A separate segment is dependent for Country of Origin for transaction types 2 (Add Consignment), 9 (Original) and 21 (Replace Consignment).
Condition : Not required for cargo reporting or empty containers. Required for low value write-offs.
- A separate segment is dependent for Port of Delivery for transaction types 2 (Add Consignment), 9 (Original) and 21 (Replace Consignment).
Condition : The Port of Delivery if different from the Port of Discharge.
- A separate segment is dependent for Port of Transshipment for transaction types 2 (Add Consignment), 9 (Original) and 21 (Replace Consignment).
Condition : The last Port of Transshipment, when the consignment has been transhipped.
- A separate segment is dependent for Place of (Final) Delivery for transaction types 2 (Add Consignment), 9 (Original) and 21 (Replace Consignment).
Condition : The Place of Final Delivery if different from the Port of Discharge and Port of Delivery.

Note: When reporting International Transshipments the port of Loading is to be shown as the relevant overseas load port; the port of transshipment as the NZ port at which the container will be loaded for export and the port of destination as the overseas destination port.

Element Rules

- Data Element 3227 must contain the type of location that the segment relates to.
- Data Element 3225, when used as a UN/LOCODE Port Code for Port of Loading, Port of Transshipment, Port of Discharge, Port of Delivery or Port of Final Delivery must be a valid UN/LOCODE port /location.
- Data Element 3225, when used for Country of Origin must be a valid ISO 3166 Country Code.

Example Syntax

LOC+7+nnnnn'	Port of Delivery
LOC+9+nnnnn'	Port of Loading
LOC+11+nnnnn'	Port of Discharge
LOC+13+nnnnn'	Place of Transshipment
LOC+27+nn'	Country of Origin
LOC+83+nnnnn'	Place of (Final) Delivery

Related Response Codes

111	Port of Loading : Not specified or invalid
486	Port of Loading : Not current
110	Port of Discharge : Not specified or invalid
544	Port of Discharge : Not current
153	Country of Origin: Not specified or invalid
156	Country of Origin: Not current
653	Place of Final Delivery : Not specified or invalid
654	Place of Final Delivery : Not current
655	Place of Transshipment : Not specified or invalid
656	Place of Transshipment : Not current
657	Port of Delivery : Not specified or invalid
658	Port of Delivery : Not current

CUSCAR	CONSIGNOR & CONSIGNEE INFORMATION	GROUP 11
---------------	--	-----------------

NAD NAME AND ADDRESS

Function : To specify the name/address and their related function, either by CO82 only and/or unstructured by CO58 or structured by CO80 thru 3207.

Element Code and Name	Format	Value	Meaning	Usage
3035 PARTY QUALIFIER	M an..3	CN CZ PK	Consignee Consignor Contact Party	R
C082 PARTY IDENTIFICATION DETAILS	C			X
3039 Party id identification	M an..35		NOT USED	X
1131 Code list qualifier	C an..3		NOT USED	X
3055 Code list responsible agency, coded	C an..3		NOT USED	X
C058 NAME AND ADDRESS	C			R
3124 Name and address line	M an..35	an..35	Name	R
3124 Name and address line	C an..35	an..35	Address Line 1	R
3124 Name and address line	C an..35	an..35	Address Line 2	O
3124 Name and address line	C an..35	an..35	Address Line 3	O
3124 Name and address line	C an..35	an..35	Address Line 4	O
C080 PARTY NAME	C			X
3036 Party name	M an..35		NOT USED	X
3036 Party name	C an..35		NOT USED	X
3036 Party name	C an..35		NOT USED	X
3036 Party name	C an..35		NOT USED	X
3036 Party name	C an..35		NOT USED	X
3045 Party name format, coded	C an..3		NOT USED	X
C059 STREET	C			X
3042 Street and number/P.O. Box	M an..35		NOT USED	X
3042 Street and number/P.O. Box	C an..35		NOT USED	X
3042 Street and number/P.O. Box	C an..35		NOT USED	X
3042 Street and number/P.O. Box	C an..35		NOT USED	X
3164 CITY NAME	C an..35		NOT USED	X
3229 COUNTRY SUB-ENTITY IDENTIFICATION	C an..9		NOT USED	X
3251 POSTCODE IDENTIFICATION	C an..9		NOT USED	X
3207 COUNTRY, CODED	C an..3		NOT USED	X

Segment Rules

- Separate segments are mandatory for Consignee and Consignor for transaction types 2 (Add Consignment), 9 (Original) and 21 (Replace Consignment).
- A separate segment is optional for Contact Party for transaction types 2 (Add Consignment), 9 (Original) and 21 (Replace Consignment).

Element Rules

- Data Element 3035 must contain qualifier codes for Consignor (CZ), Consignee (CN) and Contact Party (PK).
- Data Element 3124 should be used to contain the full name and address of the party.

Example Syntax

NAD+CN++nnn...nnn (35):nnn...nnn (35)' Consignee Name and one address line

Related Response Codes

632	Consignee Name : Not specified
633	Consignor Name : Not specified
634	Consignee Address : Not specified
635	Consignor Address : Not specified

CUSCAR	GOODS ITEM DETAIL INFORMATION	GROUP 14
---------------	--------------------------------------	-----------------

GID GOODS ITEM DETAILS

Function : **To indicate totals of a goods item.**

Element Code and Name	Format	Value	Meaning	Usage
1496 Goods Item Number	M n..5	n..3	Goods Item Number	R
C213 NUMBER AND TYPES OF PACKAGES 1	C			D
7224 Number of packages	C n..8	n..8	Number of packages	R
7065 Types of packages	C an..17	a2 or n4	Type of Package Level 1 (UN/ECE Rec. 21)	R
1131 Code list qualifier	C an..3		NOT USED	X
3055 Code list responsible agency, coded	C an..3		NOT USED	X
7064 Type of packages	C an..35		NOT USED	X
C213 NUMBER AND TYPES OF PACKAGES 2	C			D
7224 Number of packages	C n..8		NOT USED.	X
7065 Types of packages	C an..17	a2 or n4	Type of Package Level 2 (UN/ECE Rec. 21)	R
1131 Code list qualifier	C an..3		NOT USED	X
3055 Code list responsible agency, coded	C an..3		NOT USED	X
7064 Type of packages	C an..35		NOT USED	X
C213 NUMBER AND TYPES OF PACKAGES 3	C			D
7224 Number of packages	C n..8		NOT USED	X
7065 Types of packages	C an..17	a2 or n4	Type of Package Level 3 (UN/ECE Rec. 21)	R
1131 Code list qualifier	C an..3		NOT USED	X
3055 Code list responsible agency, coded	C an..3		NOT USED	X
7064 Type of packages	C an..35		NOT USED	X

Segment Rules

- Separate segments are required for each individual Goods Item within a consignment for transactions 2 (Add Consignment), 9 (Original) and 21 (Replace Consignment).

Note : A separate goods item should also be used for each empty container.

Element Rules

- Data Element 1496 is mandatory for all uses of this segment and should contain a unique serial number identifying the goods item.
- For 'Type of Package Level 1', Data Element 7224 should contain the number of packages of the type specified in Data Element 7065. It should always have a value of 1 when Data Element 7065 contains a code of bulk kind (VG, VQ, VL, VY, VR and VO).

Note : Packaging details are not required for empty containers.

- If multiple packaging levels are used, the required sequence is the outermost first to the innermost.
- Two UN code lists are available for use, for Data Element 7065. The Four-Digit code list is preferred, if available, which may ease clearance procedures. However, the alternative Two-Alpha code list can be used if preferred.

Example Syntax

GID+nnn+nnnnnnnn:nnnn' Goods Item details
 GID+nnn' Goods Item is for an empty container

Related Response Codes

640 Goods Item Number : Not specified or invalid
 641 Goods Item Number : Not unique
 188 Number of Packages : Not specified or invalid
 582 Number of Packages : Only one package expected for bulk consignment
 189 Type of Package : Not specified or invalid
 667 Type of Package : Invalid Cargo Type
 668 Type of Package : Invalid Packaging Material
 695 ECI must contain at least one consignment and one goods item

CUSCAR	GOODS ITEM DETAIL INFORMATION	GROUP 14
---------------	--------------------------------------	-----------------

FTX FREE TEXT

Function : **To provide free form or coded text information.**

Element Code and Name	Format	Value	Meaning	Usage
4451 TEXT SUBJECT QUALIFIER	M an..3	AAA PAC	Goods Description Vehicle Identification Number	R
4453 TEXT FUNCTION, CODED	C an..3		NOT USED	X
C107 TEXT REFERENCE	C		NOT USED	X
4441 Free text, coded	M an..3		NOT USED	X
1131 Code list qualifier	C an..3		NOT USED	X
3055 Code list responsible agency, coded	C an..3		NOT USED	X
C108 TEXT LITERAL	C			R
4440 Free text	M an..70	an..70 an..30	Goods Description Vehicle Identification Number	R
4440 Free text	C an..70	an..70	Goods Description	D
4440 Free text	C an..70	an..70	Goods Description	D
4440 Free text	C an..70	an..40	Goods Description	D
4440 Free text	C an..70		NOT USED	X
3453 LANGUAGE, CODED	C an..3		NOT USED	X

Segment Rules

- Up to 2 segments may be used – 1 FTX+AAA (goods description) and 1 FTX+PAC (vehicle identification number)
- 1 segment is mandatory for Goods Description for each individual Goods Item within a consignment for transactions 2 (Add Consignment), 9 (Original) and 21 (Replace Consignment).
- A separate segment is dependent for Vehicle Identification Number for each individual Goods Item within a consignment for transactions 2 (Add Consignment), 9 (Original) and 21 (Replace Consignment).
Condition : Used for vehicles only. If the Vehicle Identification Number is not known, then the Chassis No. should be used instead.
- *When the ECI is being lodged as an import container Quarantine Declaration to the Ministry of Agriculture and Forestry the Goods Description must show "MAF CONTAINER MOVEMENT REQUEST".*

Element Rules

- When used for Goods Description, up to 250 characters of free text should be used to describe the goods using up to 4 instances (3 x 70 characters and 1 x 40 characters) of Data Elements 4440 as required.
- When used for Vehicle Identification Number up to 30 characters can be used.

Example Syntax

FTX+AAA+++nnn..nnn (70):nnn..nnn (30)' Goods Description with 100 characters of text
 FTX+PAC+++nnn..nnn(30)' Vehicle Identification Number

Related Response Codes

556 Goods Description : Not specified
 692 Goods Description : MAF container release ECIs must show "MAF CONTAINER MOVEMENT REQUEST"



CUSCAR	GOODS ITEM DETAIL INFORMATION	GROUP 14
---------------	--------------------------------------	-----------------

MEA MEASUREMENTS

Function : To specify physical measurements, including dimension tolerances, weights and counts.

Element Code and Name	Format	Value	Meaning	Usage
6311 MEASUREMENT APPLICATION QUALIFIER	M an..3	WT	Weights	R
C502 MEASUREMENT DETAILS	C			D
6313 Measurement dimension, coded	C an..3	AAG	Gross weight (item level)	R
6321 Measurement significance, coded	C an..3		NOT USED	X
6155 Measurement attribute, coded	C an..17		NOT USED	X
6154 Measurement attribute	C an..70		NOT USED	X
C174 VALUE/RANGE	C			R
6411 Measure unit qualifier	M an..3	KGM	Unit of Measurement (UN/ECE Rec. 20)	R
6314 Measurement value	C an..18	n..10.n3	Gross weight (item level)	R
6162 Range minimum	C n..18		NOT USED	X
6152 Range maximum	C n..18		NOT USED	X
6432 Significant digits	C n..2		NOT USED	X
7383 SURFACE/LAYER INDICATOR, CODED	C an..3		NOT USED	X

Segment Rules

- This segment is dependent for transactions 2 (Add Consignment), 9 (Original) and 21 (Replace Consignment).
Condition : Not required for empty containers.

Element Rules

- Data Element 6314 should contain the gross weight of the measured in Kilograms.

Example Syntax

MEA+WT+AAG+KGM:nnnnnnnnnn.nnn' Gross weight for a goods item

Related Response Codes

- 205 Unit of Measurement : Invalid
- 207 Unit Quantity : Invalid

CUSCAR	GOODS ITEM DETAIL INFORMATION	GROUP 14
---------------	--------------------------------------	-----------------

MOA MONETARY AMOUNT

Function : **To specify a monetary amount.**

Element Code and Name	Format	Value	Meaning	Usage
C516 MONETARY AMOUNT	M			R
5025 Monetary amount type qualifier	M an..3	14	Value in Currency	R
5004 Monetary amount	C n..18	n..12.n2	Value in Currency	R
6345 Currency, coded	C an..3	an3	ISO 4217 Currency Code (UN/ECE Rec. 9)	R
6343 Currency qualifier	C an..3		NOT USED	X
4405 Status, coded	C an..3		NOT USED	X

Segment Rules

- This segment is dependent for transaction 2 (Add Consignment), 9 (Original) and 21 (Replace Consignment).
Condition : Not required for cargo reporting or empty containers. Required for low value write-offs.

Element Rules

- Data Element 5004 will contain the value of the consignment.
- Data Element 6345 should always contain the currency code (including NZ Dollars) for the value in currency. Refer to code list.

Example Syntax

MOA+14:nnnnnnnnnnn.nn:nnn' Value in Currency

Related Response Codes

- 173 Value in Currency : Not specified or invalid
- 458 Currency Code : Not specified or invalid

CUSCAR	GOODS ITEM DETAIL INFORMATION	GROUP 14
---------------	--------------------------------------	-----------------

SGP SPLIT GOODS PLACEMENT

Function : **To specify the placement of the goods in relation to equipment.**

Element Code and Name	Format	Value	Meaning	Usage
C237 EQUIPMENT IDENTIFICATION	M			R
8260 Equipment identification number	C	an..17 an..17	Container Number	R
1131 Code list qualifier	C	an..3	NOT USED	X
3035 Code list responsible agency, coded	C	an..3	NOT USED	X
3207 Country, coded	C	an..3	NOT USED	X
7224 NUMBER OF PACKAGES	C	n..8	NOT USED	X

Segment Rules

- This segment is conditional for transaction types 2 (Add Consignment), 9 (Original) and 21 (Replace Consignment).
Condition : Container number only required for Goods Item that is being transported in a container. It is mandatory for empty containers. Only one SGP segment can be used for each Goods Item – multiple containers must be itemised on separate Goods Items.

Element Rules

- Data Element 8260 should contain a container number as specified in the EQD segment.

Example Syntax

SGP+ nnnnnnnnnnnnnnnnn' Container number

Related Response Codes

- 481 Container Number : Not specified or invalid
- 651 Container Number : Container number not within container list

CUSCAR	GOODS ITEM DETAIL INFORMATION	GROUP 14
---------------	--------------------------------------	-----------------

DGS DANGEROUS GOODS

Function : To identify dangerous goods.

Element Code and Name		Format	Value	Meaning	Usage
8273	DANGEROUS GOODS REGULATIONS, CODED	C an..3	ICA IMD	IATA ICAO IMO IMDG	R
C205	HAZARD CODE	C			D
8351	Hazard code identification	M an..7	an..3	IATA ICAO Code IMD Class & Subclass Number	R
8078	Hazard substance/item/page number	C an..7	an..7	IMDG Code page number	O
8092	Hazard code version number	C an..10		NOT USED	X
C234	UNDG INFORMATION	C			
7124	UNDG number	C n4		NOT USED	X
7088	Dangerous goods flashpoint	C an..8		NOT USED	X
C223	DANGEROUS GOODS SHIPMENT FLASHPOINT	C			D
7106	Shipment flashpoint	C n3	n3	Flashpoint	R
6411	Measure unit qualifier	C an..3	CEL	Celsius	R
8339	PACKING GROUP, CODED	C an..3		NOT USED	
8364	EMS NUMBER	C an..6		NOT USED	
8410	MFAG	C an..4		NOT USED	
8126	TREM CARD NUMBER	C an..10		NOT USED	
C235	HAZARD IDENTIFICATION PLACARD DETAILS	C			
8158	Hazard identification number, upper part	C an..4		NOT USED	
8186	Substance identification number, lower part	C an4		NOT USED	
C236	DANGEROUS GOODS LABEL	C			
8246	Dangerous goods label marking	C an..4		NOT USED	
8246	Dangerous goods label marking	C an..4		NOT USED	
8246	Dangerous goods label marking	C an..4		NOT USED	
8255	PACKING INSTRUCTION, CODED	C an..3		NOT USED	
8325	CATEGORY OF MEANS OF TRANSPORT, CODED	C an..3		NOT USED	
8211	PERMISSION FOR TRANSPORT, CODED	C an..3		NOT USED	

Segment Rules

- This segment is conditional for transaction types 2 (Add Consignment), 9 (Original) and 21 (Replace Consignment).
Condition : Must be reported where dangerous goods are present. Flammable goods must also contain a flashpoint.

Element Rules

- Data Element 8351 should contain the IMD Class and Subclass Number. (Seafreight) or IATA ICAO Code (Airfreight)
- Data Element 8078, if known, should contain the IMDG Code page number.
- Data Element 6411 should contain the flashpoint in Celsius.

Example Syntax

DGS+IMD+nnn:nnnnnnn'	Non flammable Dangerous Goods
DGS+IMD+nnn:nnnnnnn++nnn:CEL	Flammable Dangerous Goods

CUSCAR	CONSIGNMENT INFORMATION	GROUP 14
---------------	--------------------------------	-----------------

LOC PLACE/LOCATION IDENTIFICATION

Function : To identify a country/place/location/related location one/related location two.

Element Code and Name		Format	Value	Meaning	Usage
3227	PLACE/LOCATION QUALIFIER	M an..3	4 107	Place of Origin Container Pack Location	R
C517	LOCATION IDENTIFICATION	C			R
3225	Place/location identification	C an..25	an5	UN/LOCODE	R
1131	Code list qualifier	C an..3		NOT USED	X
3055	Code list responsible agency, coded	C an..3		NOT USED	X
3224	Place/location	C an..70		NOT USED	X
C519	RELATED LOCATION ONE IDENTIFICATION	C		NOT USED	X
3223	Related place/location one identification	C an..25		NOT USED	X
1131	Code list qualifier	C an..3		NOT USED	X
3055	Code list responsible agency, coded	C an..3		NOT USED	X
3222	Related place/location one	C an..70		NOT USED	X
C553	RELATED LOCATION TWO IDENTIFICATION	C		NOT USED	X
3233	Related place/location two identification	C an..25		NOT USED	X
1131	Code list qualifier	C an..3		NOT USED	X
3055	Code list responsible agency, coded	C an..3		NOT USED	X
3232	Related place/location two	C an..70		NOT USED	X
5479	RELATION, CODED	C an..3		NOT USED	X

Segment Rules

- A separate segment is dependent for Container Pack Location for transaction types 2 (Add Consignment), 9 (Original) and 21 (Replace Consignment).
Condition : The Container Pack Location if different from the Port of Loading specified at the consignment level.
- A separate segment is dependent for Place of Origin for transaction types 2 (Add Consignment), 9 (Original) and 21 (Replace Consignment).
Condition : The Place of Origin if different from the Port of Loading and Container Pack Location.

Element Rules

- Data Element 3227 must contain the type of location that the segment relates to.
- Data Element 3225, must contain a UN/LOCODE location code.

Example Syntax

LOC+4+nnnnn' Place of Origin
LOC+107+nnnnn' Container Pack Location

Related Response Codes

663 Place of Origin : Not specified or invalid
664 Place of Origin : Not current
665 Container Pack Location : Not specified or invalid
666 Container Pack Location : Not current

CUSCAR	MESSAGE TRAILER	MESSAGE
---------------	------------------------	----------------

UNT MESSAGE TRAILER

Function : To end and check the completeness of a message.

Element Code and Name	Format	Value	Meaning	Usage
0074 NUMBER OF SEGMENTS IN A MESSAGE	M n..6	n..6	Number of Segments	R
0062 MESSAGE REFERENCE NUMBER	M an..14	an..14	Transaction Number	R

Segment Rules

- This segment is mandatory for all entry transaction types.

Element Rules

- Data Element 0074 must contain the total number of segments within message.
- Data Element 0062 must be a unique sequential number for each transaction transmitted to NZCS, which must be the same as that stated in the corresponding UNH segment at the start of the message.

Example Syntax

UNT+nnnnnn+nnnnnnnnnnnnnn'

CUSCAR	INTERCHANGE TRAILER	INTERCHANGE
---------------	----------------------------	--------------------

UNZ INTERCHANGE TRAILER

Function : To end and check the completeness of an interchange.

Element Code and Name	Format	Value	Meaning	Usage
0036 INTERCHANGE CONTROL COUNT	M n..6	n..6	Number of Messages	R
0020 INTERCHANGE CONTROL REFERENCE	M an..14	an..14	Interchange Reference	R

Segment Rules

- This segment is mandatory for all interchanges.

Element Rules

- Data Element 0036 should contain the total number of messages (i.e. new ECIs or ECI adjustments) within the interchange.
- Data Element 0020 should contain a unique reference to identify the interchange for tracking purposes, which must be the same as the reference stated in the corresponding UNB segment.

Example Syntax

UNZ+nnnnnn+nnnnnnnnnnnnnn'

3.5 *Data Mapping Matrix*

The following pages provide a summary of the data mapping requirements by transaction type. This can be used as a check list when producing EDI messages.

Group	Segment	Field	Cancel ECI (1)	Add Consignment (2)	Cancel Consignment (3)	Original (9)	Replace Header Details (20)	Replace Consignment (21)
Interchange	UNA		R	R	R	R	R	R
	UNB	Trading Partner Code	R	R	R	R	R	R
		Date of Preparation	R	R	R	R	R	R
		Time of Preparation	R	R	R	R	R	R
		Interchange Reference	R	R	R	R	R	R
Header	UNH	Transaction Number	R	R	R	R	R	R
		ECI Number	R	R	R		R	R
	BGM	Carrier Reference Number	R	R	R	R	R	R
		Transaction Type	R	R	R	R	R	R
Group 2	NAD	Carrier Name				R	R	
		Consolidator Name				D	D	
	FTX	Remarks	O	O	O	O	O	O
Group 4	TDT	Voyage No.				D	D	
		Transport Mode				R	R	
		Craft Name or Flight No.				R	R	
	LOC	Port of Arrival				R	R	
	DTM	Date of Arrival				R	R	
	GIS	ECI Type				R	R	
		Full/Part Indicator				R	R	
Group 5	EQD	Container Number				D	D	
		Container Status				D	D	
		Container Size/Type Code				D	D	
	GIS	Attached Equipment Ind.				R	R	
		Quarantine Code				D	D	
	Prohibited Packaging Ind.				R	R		
Ungrouped	CNT	Total Consignments		R	R	R		R
		Total Containers				D	D	
Group 7	CNI	Consignment Number		R	R	R		R
Group 8	RFF	Bill Type		R		R		R
		Bill Number		R		R		R
	LOC	Port of Loading		R		R		R
		Port of Discharge		R		R		R
		Country of Origin		R		R		R

Group	Segment	Field	Cancel ECI (1)	Add Consignment (2)	Cancel Consignment (3)	Original (9)	Replace Header Details (20)	Replace Consignment (21)
		Port Of Delivery		D		D		D
		Place of (Final) Delivery		D		D		D
		Place of Transhipment		D		D		D
Group 11	NAD	Consignee Name		R		R		R
		Consignee Address		R		R		R
		Consignor Name		R		R		R
		Consignor Address		R		R		R
		Contact Party Name		O		O		O
		Contact Party Address		O		O		O
Group 14	GID	Goods Number		R		R		R
		Number of Packages		D		D		D
		Type of Packages - Level 1		D		D		D
		Type of Packages - Level 2		O		O		O
		Type of Packages - Level 3		O		O		O
	FTX	Goods Description		R		R		R
		Vehicle Identification Number		D		D		D
	MEA	Gross Weight		D		D		D
	MOA	Value in Currency		D		D		D
	SGP	Container Number		D		D		D
	DGS	Dangerous Goods Code		D		D		D
		Dangerous Goods Number		O		O		O
		Flashpoint		D		D		D
Group 15	LOC	Place of Origin		D		D		D
		Container Pack Location		D		D		D
Ungrouped	UNT	Number of Segments	R	R	R	R	R	R
		Transaction Number	R	R	R	R	R	R
	UNZ	Number of Messages	R	R	R	R	R	R
		Interchange Reference	R	R	R	R	R	R

4. CUSTOMS RESPONSE MESSAGE (CUSRES)

4.1 Overview

The specifications within this section are for the Customs Response Message, known as CUSRES. The CUSRES message will be used for all application responses from Customs including, for example, error (i.e. rejection) report, free text instructions, write-offs and confirmation of adjustments.

A CUSRES message, hereafter referred to as a response, can be any one of 3 different types. Many of these are further broken down by a coded ECI status, which provides more information about the response type. The possible responses, along with their possible ECI status codes, short descriptions and meanings, are as follows ;-

Response 963 - Rejection Report

841 ECI rejected, error report attached

This response will be transmitted when an ECI has been rejected. An error report will follow.

858 Customs Translation Processing Error

This response will be transmitted when an EDI message fails EDI translation, fails EDI Interface processing or "breaks twice" during pipe processing.

Response 962 - Inspections/Audit Requirements

805 Customs instructions as specified

This response will be transmitted by the Customs Officer processing the ECI. It will contain free text instructions.

855 MAF instructions as specified to Port Company

This response is transmitted to Port Authorities to advise them of the required MAF action. It applies to CUSCARs only. The instructions will be contained in the FTX segment and will show either "MAF clearance given to move from Wharf to an ATF" or one, many, or all of the other actions being External, Fumigate, Wash, Hold, Internal, Audit.

856 MAF instructions as specified to Originator

This response is transmitted to Originator to advise them of the required MAF action. It applies to CUSCARs only. The instructions will be contained in the FTX segment and will show either "MAF clearance given to move from Wharf

to an ATF" or one, many, or all of the other actions being External, Fumigate, Wash, Hold, Internal, Audit.

857 MAF container cancellation advice to Port Company

This response is transmitted to Port Authorities to advise them of a cancellation of an ECI which was lodged for MAF Container declaration purposes. It applies to CUSCARs only. The cancellation confirmation will be transmitted to the Originator in the normal manner.

Response 965 - Confirmation of Adjustment

830 Adjustment accepted

This response will be transmitted to confirm that an adjustment has been accepted and applied to the ECI held on the NZCS system.

Response 932 - Write-Off Report

842 ECI Received OK, consignments have been written off

This response will be transmitted listing the consignments that have been cleared by NZCS.

843 ECI Received with errors, some consignments may have been written off

This response will be transmitted listing the consignments that have been cleared by NZCS. Any consignments within the message that have errors will be identified.

844 ECI Received OK, no consignments were written off

This response will be transmitted indicating that the ECI was received with no errors and no consignments written off.

846 ECI Export Clearance Port Notification

This response is only transmitted to Port Authorities to advise them of release of empty containers or certain exempt full containers (e.g. Personal Effects)

849 Cancel ECI Port Notification advice

This response is only transmitted to Port Authorities to advise then of the cancellation of a previously sent 846 Clearance advice

850 ECI Tranship Clearance Port Notification

This response is only transmitted to Port Authorities to advise them of release of Tranship cargo.

851 Cancel ECI Tranship Port Notification advice

This response is only transmitted to Port Authorities to advise them of the cancellation of a previously sent 850 Clearance advice

The content of the response is dependent on the above response types. Although the full structure will never be transmitted as one complete message, a typical response would consist of a subset of the structure shown below.

Start of Interchange

Start of Message

Header Information (Part 1)

Rejection Report

ECI Acceptance Report

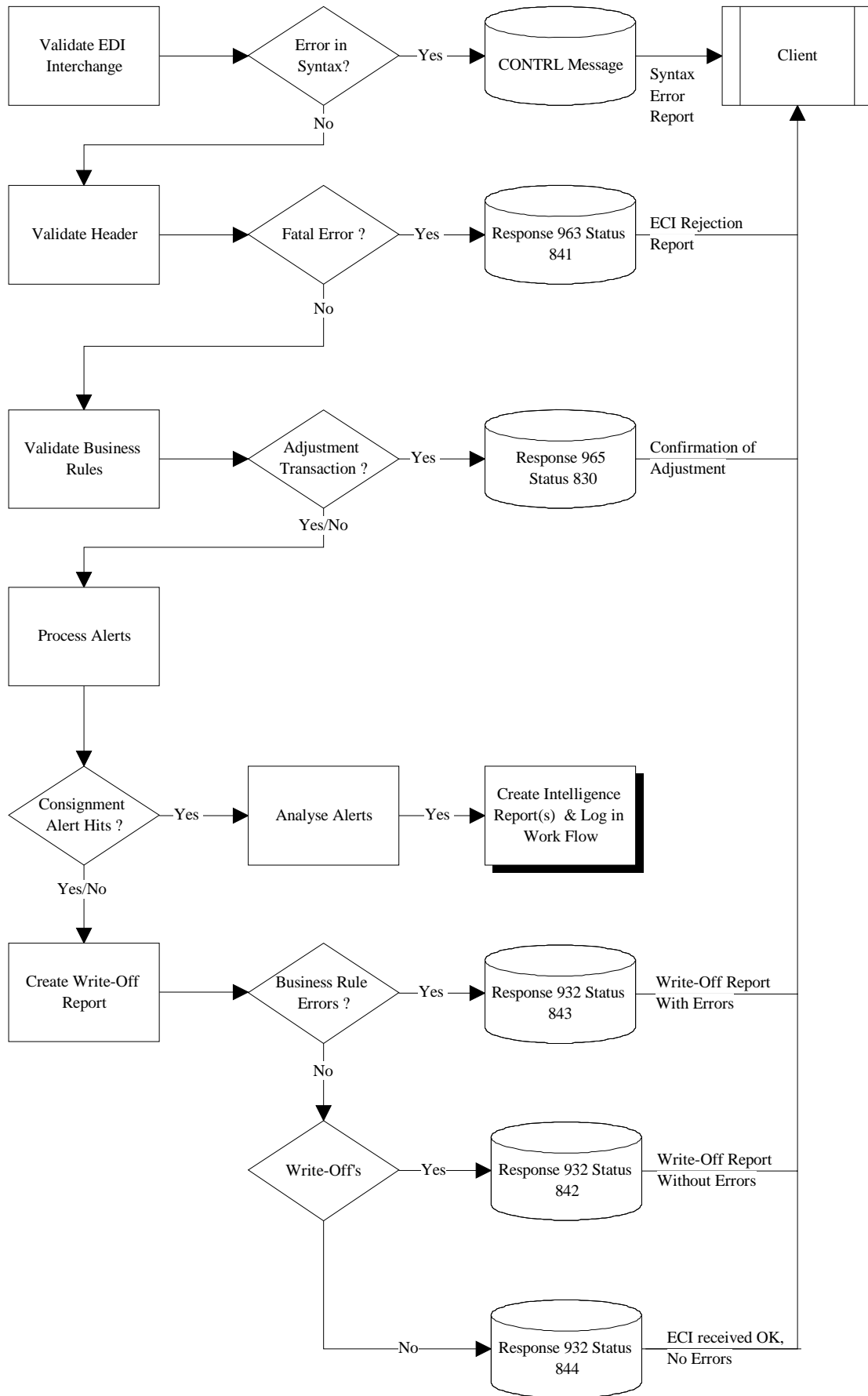
Consignment Error Report

Summary Information

End of Message

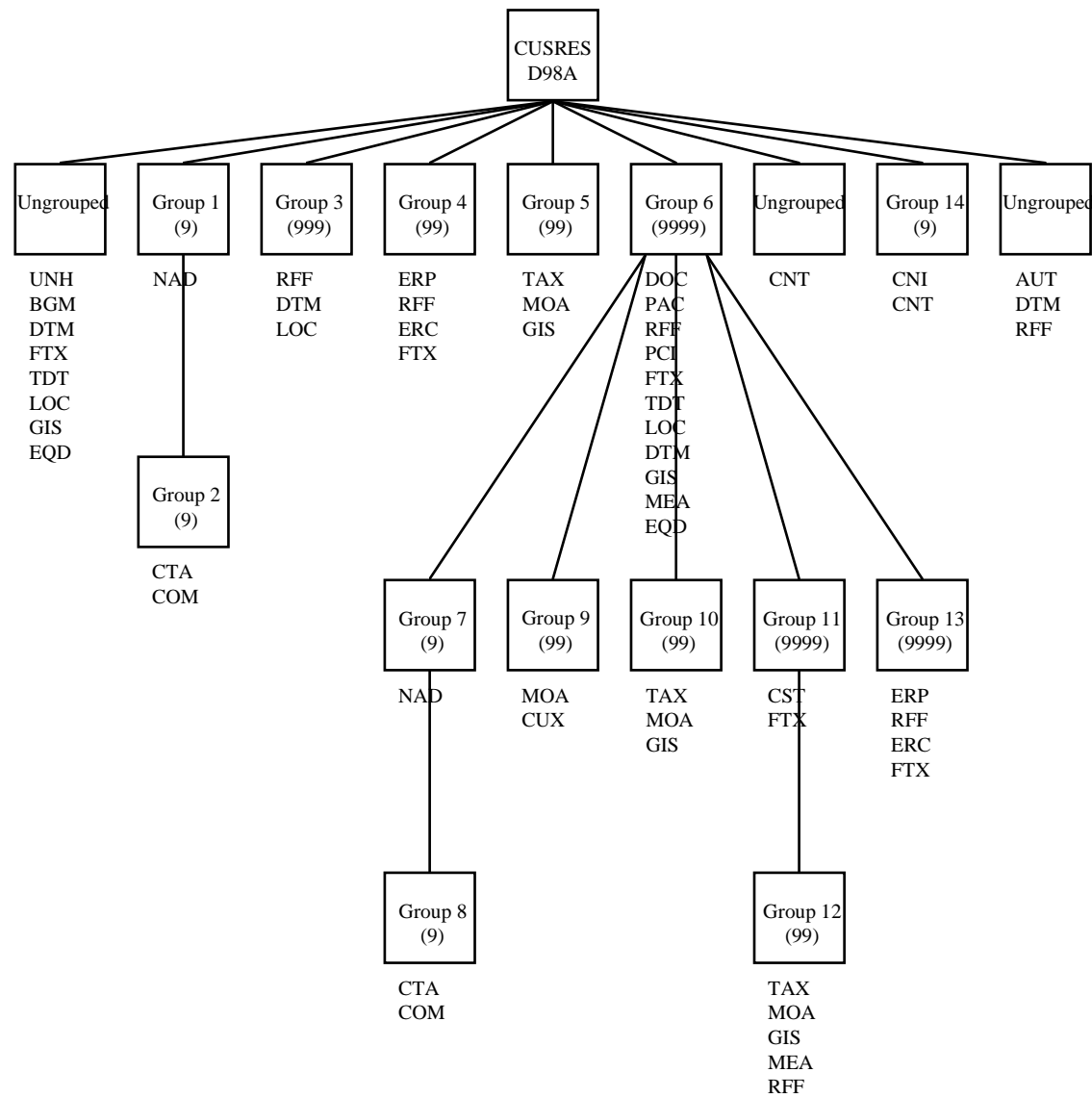
End of Interchange

The specifications within this section provide the detail for all the possible CUSRES responses that can be expected from the New Zealand Customs Service system. The following pages are intended to provide some indication where in the process the responses would have originated.



4.2 *Message Structure Diagram*

The following page shows the full UN/EDIFACT message structure for the Customs Response (CUSRES) message as defined by the D98A directory.



4.3 *Segment Table*

The following segment table provides the full UN/EDIFACT structure complete with all groups and segments as they are defined in directory D98A of the standard. The table has also been sectionalised in such a way to provide continuity of terminology throughout the rest of the specifications. The left hand side of the table contains the UN/EDIFACT terms, including the segment position, tag or group name and format (i.e. usage requirements and maximum number of occurrences). The right hand side of the table contains the terms and use of New Zealand Customs Service. This includes a maximum use of the segment and also what the segments are used to define, if used at all.

CUSRES		SEGMENT TABLE				D98A
Segment Position, Tag (or group no.) and Name		Format	Max.	NZCS Usage		
Start of Interchange						
	UNA	Service String Advice	M	1	1	Segment Delimiters
	UNB	Interchange Header	M	1	1	Trading Partner Code, Transmission Date & Time, Interchange Reference
Start of Message						
0010	UNH	Message Header	M	1	1	Transaction Number, Senders Reference
Header Information (Part 1)						
0020	BGM	Beginning of Message	M	1	1	Response Type, ECI Number
0030	DTM	Date/time/period	C	9		NOT USED
0040	FTX	Free text	C	9	1	Customs Instructions
0050	TDT	Details of transport	C	9	1	Voyage Number Transport Mode, Craft Name of Flight No
0060	LOC	Place/location identification	C	99		NOT USED
0070	GIS	General indicator	C	10	1	ECI Status
0080	EQD	Equipment details	C	999		NOT USED
0090	SG1	NAD-SG2	C	9		
0100	NAD	Name and address	M	1		NOT USED
0110	SG2	CTA-COM	C	9		
0120	CTA	Contact information	M	1		NOT USED
0130	COM	Communications contact	C	9		NOT USED
0140	SG3	RFF-DTM-LOC	C	999		
0150	RFF	Reference	M	1		NOT USED
0160	DTM	Date/time/period	C	9		NOT USED
0170	LOC	Place/location identification	C	9		NOT USED
Rejection Report						
0180	SG4	ERP-RFF-ERC-FTX	C	99		
0190	ERP	Error point details	M	1	1	Error Section, Container Number, Field Number
0200	RFF	Reference	C	9		NOT USED
0210	ERC	Application error information	C	99	1	Error Code
0220	FTX	Free text	C	99		NOT USED
0230	SG5	TAX-MOA-GIS	C	99		
0240	TAX	Duty/tax/fee details	M	1		NOT USED
0250	MOA	Monetary amount	C	99		NOT USED
0260	GIS	General indicator	C	99		NOT USED

ECI Write-Off Report						
0270	SG6	DOC-PAC-RFF-PCI-FTX-TDT-LOC-DTM-GIS-MEA-EQD-SG7-SG9-SG10-SG12	C	9999	9999	
0280	DOC	Document/message details	M	1	1	Consignment Number, Bill Number
0290	PAC	Package	C	9		NOT USED
0300	RFF	Reference	C	9		NOT USED
0310	PCI	Package identification	C	9		NOT USED
0320	FTX	Free text	C	9	1	Customs/MAF Instructions
0330	TDT	Details of transport	C	9		NOT USED
0340	LOC	Place/location identification	C	9		NOT USED
0350	DTM	Date/time/period	C	9		NOT USED
			C			
0360	GIS	General indicator	C	9		NOT USED
0370	MEA	Measurements	C	99		NOT USED
0380	EQD	Equipment details	C	999	1	Container Number, Container Status
0390	SG7	NAD-SG8	C	9		
0400	NAD	Name and address	M	1		NOT USED
0410	SG8	CTA-COM	C	9		
0420	CTA	Contact information	M	1		NOT USED
0430	COM	Communication contact	C	9		NOT USED
0440	SG9	MOA-CUX	C	99		
0450	MOA	Monetary amount	M	1		NOT USED
0460	CUX	Currencies	C	9		NOT USED
0470	SG10	CST-FTX-SG11	C	9999		
0480	CST	Customs status of goods	M	1		NOT USED
0490	FTX	Free text	C	9		NOT USED
0500	SG11	TAX-MOA-GIS-MEA-RFF	C	99		
0510	TAX	Duty/tax/fee details	M	1		NOT USED
0520	MOA	Monetary amount	C	99		NOT USED
0530	GIS	General indicator	C	99		NOT USED
0540	MEA	Measurements	C	9		NOT USED
0550	RFF	Reference	C	9		NOT USED
Consignment Error Report						
0560	SG12	ERP-RFF-ERC-FTX	C	9999	99	
0570	ERP	Error point details	M	1	1	Error Section, Goods Item Number, Field Number
0580	RFF	Reference	C	9		NOT USED
0590	ERC	Application error information	C	99	1	Error Code
0600	FTX	Free text	C	9		NOT USED
Summary Information						
0610	CNT	Control total	C	9	1	Total Number of Consignments Written-Off
0620	SG13	AUT-DTM	C	9		
0630	AUT	Authentication result	M	1		NOT USED
0640	DTM	Date/time/period	C	9		NOT USED

End of Message						
0650	UNT	Message trailer	M	1	1	Total Number of Segments, Transaction Number
End of Interchange						
	UNZ	Interchange Trailer	M	1	1	Total Number of Messages, Interchange Reference

4.4 *Segment Definitions*

The following pages show the CUSRES segment definitions and detailed specifications as used by the New Zealand Customs Service.

A segment definition is where the lowest level of detail is defined. Each segment has its own table providing the full UN/EDIFACT segment structure, complete with composite and/or data elements. Every table is headed by the official segment title and functional description. The left hand side of the table contains the UN/EDIFACT terms, including composite or data element code, name and format (i.e. usage requirements and size). The right hand side of the table contains the sizes or fixed values (in bold where applicable) and the name of the data as referred to by the New Zealand Customs Service.

Following each segment definition table, a shaded area contains both segment and element. The segment rules usually advise whether the associated data is required for the transaction type. The element rules describe the requirements for the data, especially where the data is variable or user defined. Element rules normally contain the format or, in many cases, where there are dependencies on data in other segments.

Also within the shaded areas, example syntax shows how the syntax will look when constructed. Response codes that specifically relate to the use of the segment are also listed. This has been done intentionally, where the business rules may change more frequently than others and therefore the validation for them should not be 'hard coded' within your software.

CUSRES	START OF INTERCHANGE	INTERCHANGE
---------------	-----------------------------	--------------------

UNA SERVICE STRING ADVICE

Function : To define the characters selected for use as delimiters and indicators in the rest of the interchange that follows:

Element Code and Name	Format	Value	Meaning	Usage
COMPONENT DATA ELEMENT SEPARATOR	M an1	:		R
DATA ELEMENT SEPARATOR	M an1	+		R
DECIMAL NOTATION	M an1	.		R
RELEASE INDICATOR	M an1	?		R
Reserved	M an1	Space		R
SEGMENT TERMINATOR	M an1	'		R

Segment Rules

- This segment will be mandatory for all interchanges.

Example Syntax

UNA:+.? '

CUSRES	START OF INTERCHANGE	INTERCHANGE
---------------	-----------------------------	--------------------

UNB INTERCHANGE HEADER

Function : To start, identify and specify an interchange.

Element Code and Name		Format	Value	Meaning	Usage
S001	SYNTAX IDENTIFIER	M			R
0001	Syntax identifier	M a4	UNOA	UN/ECE Level A	R
0002	Syntax version number	M n1	2	Version Two	R
S002	INTERCHANGE SENDER	M			R
0004	Sender identification	M an..35	CUSMOD	NZCS System Id	R
0007	Partner identification code qualifier	C an..4	ZZZ	Mutually Defined	R
0008	Address for reverse routing	C an..14		NOT USED	X
S003	INTERCHANGE RECIPIENT	M			R
0010	Recipient identification	M an..35	an9	Trading Partner Code	R
0007	Partner identification code qualifier	C an..4	ZZZ	Mutually Defined	R
0014	Routing address	C an..14		NOT USED	X
S004	DATE/TIME OF PREPARATION	M			R
0017	Date of preparation	M n6	n..6	Date Format YYMMDD	R
0019	Time of preparation	M n4	n..4	Time Format HHMM	R
0020	INTERCHANGE CONTROL REFERENCE	M an..14	an..14	Interchange Reference	R
S005	RECIPIENTS REFERENCE PASSWORD	C			X
0022	Recipient's reference/password	M an..14		NOT USED	X
0025	Recipient's reference/password qualifier	C an2		NOT USED	X
0026	APPLICATION REFERENCE	C an..14		NOT USED	X
0029	PROCESSING PRIORITY CODE	C a1		NOT USED	X
0031	ACKNOWLEDGEMENT REQUEST	C n1		NOT USED	X
0032	COMMUNICATIONS AGREEMENT ID	C an..35		NOT USED	X
0035	TEST INDICATOR	C n1		NOT USED	X

Segment Rules

- This segment will be mandatory for all interchanges.

Element Rules

- Data Element 0010 will contain the client/broker code with whom the trading partnership exists between in the format of 8 digits plus check letter.
- Composite Element S004 will contain the date (Data Element 0017) and time (Data Element 0025) when the interchange was created.
- Data Element 0020 will contain a unique reference generated by NZCS identifying the interchange for tracking purposes.

Example Syntax

UNB+UNOA:1+CUSMOD:ZZZ+nnnnnnnnn:ZZZ+nnnnnn:nnnn+nnnnnnnnnnnnnn'

CUSRES	START OF MESSAGE	MESSAGE
---------------	-------------------------	----------------

UNH MESSAGE HEADER

Function : To head, identify and specify a message.

Element Code and Name	Format	Value	Meaning	Usage
0062 MESSAGE REFERENCE NUMBER	M an..14	an..14	Transaction Number	R
S009 MESSAGE IDENTIFIER	M			R
0065 Message type identifier	M an..6	CUSRES	Customs Declaration	R
0052 Message type version number	M an..3	D	Directory Version	R
0054 Message type release number	M an..3	98A	Release Number	R
0051 Controlling agency	M an..2	UN	Agency	R
0057 Association assigned Code	C an..6		NOT USED	X
0068 COMMON ACCESS REFERENCE	C an..35	an..14	Senders Reference Number	R
S010 STATUS OF THE TRANSFER	C		NOT USED	X
0070 Sequence message transfer number	M n..2		NOT USED	X
0073 First/last sequence message transfer indicator	C a1		NOT USED	X

Segment Rules

- This segment will be mandatory for all transaction types.

Element Rules

- Data Element 0062 will contain a unique sequential number generated by NZCS identifying the transaction.
- Data Element 0068 will contain the Senders Reference number quoted by the client in the original ECI. This must be quoted on all subsequent transactions.

Example Syntax

UNH+nnnnnnnnnnnnnn+CUSRES:D:98A:UN+nnnnnnnnnnnnnn'

CUSRES	HEADER INFORMATION	HEADER
---------------	---------------------------	---------------

BGM BEGINNING OF MESSAGE

Function : To indicate the type and function of a message and to transmit the identifying number.

Element Code and Name	Format	Value	Meaning	Usage
C002 DOCUMENT/MESSAGE NAME	C			R
1001 Document/message name, coded	C an..3		Response Type :-	R
		932	ECI Write-Off Report	
		963	ECI Rejection Report	
		962	Inspections/Audit Requirements	
		965	Confirmation of Adjustment	
1131 Code list qualifier	C an..3		NOT USED	X
3055 Code list responsible agency, coded	C an..3		NOT USED	X
1000 Document/message name	C an..35		NOT USED	X
C106 DOCUMENT/MESSAGE IDENTIFICATION	C			R
1004 Document/message number	C an..35	n8	ECI Number	R
1056 Version	C an..9	01	ECI Version	D
1060 Revision Number	C an..6		NOT USED	X
1225 MESSAGE FUNCTION, CODED	C an..3		NOT USED	X
4343 RESPONSE TYPE, CODED	C an..3		NOT USED	X

Segment Rules

- This segment will be mandatory for all transaction types.

Element Rules

- Data Element 1001 will be used to classify the type of response.
- Data Element 1004 will contain the ECI Number, which must be used for all further transactions with NZCS. Note: the ECI Number 00000000 denotes that the original message has not been stored by the Customs System (generally as a result of a fatal error). Once errors are corrected, the message can be resent as a type 9 (original). Do not quote 00000000 on the resend.
- Data Element 1056 will only be sent in responses to Port Authorities and will always be 01.

Example Syntax

BGM+932+nnnnnnnn' ECI Write-Off Report
 BGM+932+nnnnnnnn:01' ECI notification to Port Authority

CUSRES	HEADER INFORMATION	HEADER
---------------	---------------------------	---------------

FTX FREE TEXT

Function To provide free form or coded text information.

Element Code and Name	Format	Value	Meaning	Usage
4451 TEXT SUBJECT QUALIFIER	M an..3	ICN	Customs Instructions	R
4453 TEXT FUNCTION, CODED	C an..3		NOT USED	X
C107 TEXT REFERENCE	C		NOT USED	X
4441 Free text, coded	M an..3		NOT USED	X
1131 Code list qualifier	C an..3		NOT USED	X
3055 Code list responsible agency, coded	C an..3		NOT USED	X
C108 TEXT LITERAL	C			R
4440 Free text	M an..70	an..70	Remarks	R
4440 Free text	C an..70	an..70	“	O
4440 Free text	C an..70	an..70	“	O
4440 Free text	C an..70	an..40	“	O
4440 Free text	C an..70		NOT USED	X
3453 LANGUAGE, CODED	C an..3		NOT USED	X

Segment Rules

- This segment will be required for Response Type 962 (Inspections/Audit Requirements) containing Customs Instructions, when the ECI status in the GIS segment is 805.

Element Rules

- At least one instance of Data Element 4440 will be required, with the remaining being optional.

Example Syntax

FTX+ICN+++nnn...nnn (70):nnn...nnn (70)' Two lines of Customs instructions

CUSRES	HEADER INFORMATION (PART 1)	HEADER
---------------	------------------------------------	---------------

TDT DETAILS OF TRANSPORT

Function : **To specify the transport details such as mode of transport, means of transport, its conveyance reference number and the identification of the means of transport. The segment may be pointed to by the TPL segment.**

Element Code and Name	Format	Value	Meaning	Usage
8051 TRANSPORT STAGE QUALIFIER	M an..3	20	Main Carriage Transport	R
8028 CONVEYANCE REFERENCE NUMBER	C an..17	an..8	Voyage Number	D
C220 MODE OF TRANSPORT	C			X
8067 Mode of transport, coded	C an..3	1	Transport Mode ; - Sea	R
8066 Mode of transport	C an..17		NOT USED	X
C228 TRANSPORT MEANS	C		NOT USED	X
8179 Type of means of transport identification	C an..8		NOT USED	X
8178 Type of means of transport	C an..17		NOT USED	X
C040 CARRIER	C		NOT USED	X
3127 Carrier identification	C an..17		NOT USED	X
1131 Code list qualifier	C an..3		NOT USED	X
3055 Code list responsible agency, coded	C an..3		NOT USED	X
3128 Carrier name	C an..35		NOT USED	X
8101 TRANSIT DIRECTION, CODED	C an..3		NOT USED	X
C401 EXCESS TRANSPORTATION INFORMATION	C		NOT USED	X
8457 Excess transportation reason, coded	M an..3		NOT USED	X
8459 Excess transportation responsibility, coded	M an..3		NOT USED	X
7130 Customer authorisation number	C an..17		NOT USED	X
C222 TRANSPORT IDENTIFICATION	C			D
8213 Id of means of transport identification	C an..9		NOT USED	X
1131 Code list qualifier	C an..3		NOT USED	X
3055 Code list responsible agency, coded	C an..3		NOT USED	X
8212 Id of the means of transport	C an..35	an..30	Craft Name	R
8453 Nationality of means of transport, coded	C an..3		NOT USED	X
8281 TRANSPORT OWNERSHIP, CODED	C an..3		NOT USED	X

Segment Rules

- This segment will be mandatory for Response Types 932 or 962 to a Port Authority.
- This segment is not required for Response Types 932 or 962 to the Originator.

Element Rules

- Data Element 8051 will be mandatory for all uses of this segment and will always be 20.
- Data Element 8028 will be mandatory for all uses of this segment and will be the voyage number for the vessel specified in element 8212.
- Data Element 8067 will be mandatory for all uses of this segment and will always be 1.
- Data Element 8212 will be mandatory for all uses of this segment and will always be name of the vessel.

Example Syntax

TDT+20+nnnnnnnn+1+++++:::nnnnnnnnnnnnnnnn' Sea Freight Details

CUSRES	HEADER INFORMATION	HEADER
---------------	---------------------------	---------------

GIS GENERAL INDICATOR

Function : **To transmit a processing indicator.**

Element Code and Name	Format	Value	Meaning	Usage
C529 PROCESSING INDICATOR	M			R
7365 Processing indicator, coded	M an..3	n..3	ECI Status	R
1131 Code list qualifier	C an..3	120	Customs Status of Goods	R
3055 Code list responsible agency, coded	C an..3	143	NZCS	R
7187 Process type identification	C an..17		NOT USED	X

Segment Rules

- This segment will be mandatory for all transaction types.

Element Rules

- Data Element 7365 will contain one of the following codes advising of the status of the ECI :-

Valid for Response Type 932 (ECI Acceptance Report)

- 842 ECI received OK, consignments have been written off
- 843 ECI received with errors, some consignments may have been written off
- 844 ECI received OK, no consignments were written-off
- 846 ECI Export Clearance Port Notification
- 849 Cancel ECI Export Clearance Port Notification
- 850 ECI Transhipment Clearance Port Notification
- 851 Cancel ECI Transhipment Port Notification

Inspections/Audit Requirements)

- 805 Customs instructions as specified
- 855 MAF instructions as specified to Port Company
- 856 MAF instructions as specified to Originator
- 857 MAF container cancellation advice to Port Company

Valid for Response Type 963 (ECI Rejection Report)

- 841 ECI rejected, error report attached
- 858 Customs Translation Processing Error

Valid for Response Type 965 (Confirmation of Adjustment)

- 830 Adjustment accepted

Example Syntax

GIS+842:120:143' Consignments written-off as specified, without errors

CUSRES	REJECTION REPORT	GROUP 4
---------------	-------------------------	----------------

ERP ERROR POINT DETAILS

Function : A segment to identify the location of an application error within a message.

Element Code and Name	Format	Value	Meaning	Usage
C701 ERROR POINT DETAILS	C			R
1049 Message section, coded	C an..3	1	ECI Header Details	R
		2	Container List	
1052 Message item number	C an..35	an..3	Container Sequence Number	D
1054 Message sub-item number	C n..6	n..3	Field Number	R
C853 ERROR SEGMENT POINT DETAILS	C			X
9166 Segment tag	C an..3		NOT USED	X
1030 Sequence number	C an..10		NOT USED	X
1159 Sequence number source, coded	C an..3		NOT USED	X

Segment Rules

- Up to 99 segments will be included, one for each error, for Response Type 963 (ECI Rejection Report).

Element Rules

- Data Element 1049 will contain the part of the ECI header in error. When the error is in the main header details, the value will be 001. When the error is within the container list the value will be 002.
- Data Element 1052 will only be specified if the error is within the container details. The number will identify the container within the list in the order that it was transmitted to NZCS.
- Data Element 1054 will be included containing the field number (see code list), where the error is applicable to.

Example Syntax

ERP+1::nnn' An error has occurred within the ECI header details.
 ERP+1:nnn:nnn' An error has occurred within the container list.

CUSRES	REJECTION REPORT	GROUP 4
---------------	-------------------------	----------------

ERC APPLICATION ERROR INFORMATION

Function : To identify the type of application error within a message.

Element Code and Name	Format	Value	Meaning	Usage
C901 APPLICATION ERROR DETAIL	M			R
9321 Application error, coded	M an..3	n3	Error Code	R
1131 Code list qualifier	C an..3		NOT USED	X
3055 Code list responsible agency, coded	C an..3	143	NZCS	R

Segment Rules

- This Segment will follow an ERP segment, mandatory for Response Type 963 (ECI Rejection Report).

Element Rules

- Data Element 9321 will contain an error code describing the error (see code list).
- Data Element 3055 will always contain 143.

Example Syntax

ERC+nnn::143' Error Code

CUSRES	ECI WRITE-OFF REPORT	GROUP 6
---------------	-----------------------------	----------------

DOC DOCUMENT/MESSAGE DETAILS

Function : To identify documents, either printed, electronically transferred, or referenced as specified in message description, including, where relevant, the identification of the type of transaction that will result from this message.

Element Code and Name	Format	Value	Meaning	Usage
C002 DOCUMENT/MESSAGE NAME	M			R
1001 Document/message name, coded	C an..3	WOF ERR HLD 25 MAF	Consignment Write Off Consignment in Error Consignment Held Container Instructions to Port Company MAF Container Instructions to Originator	R
1131 Code list qualifier	C an..3	148 118	Customs Release Notification Quarantine Code	R
3055 Code list responsible agency, coded	C an..3	143	NZCS	R
1000 Document/message name	C an..35		NOT USED	X
C503 DOCUMENT/MESSAGE DETAILS	C			R
1004 Document/message number	C an..35	n..4	Consignment Number	R
1373 Document/message status, coded	C an..3		NOT USED	X
1366 Document/message source	C an..35	an..17	Bill Number	R
3453 Language, coded	C an..3		NOT USED	X
3153 COMMUNICATION CHANNEL IDENTIFIER, CODED	C an..3		NOT USED	X
1220 NUMBER OF COPIES OF DOCUMENT REQUIRED	C n..2		NOT USED	X
1218 NUMBER OF ORIGINALS OF DOCUMENT REQUIRED	C n..2		NOT USED	X

Segment Rules

- Up to 2000 segments will contain details of all ECI consignments that have been written-off by Customs for Response Type 932 (ECI Write-Off Report).
- This segment is required for Response Type 962 MAF Container Instructions to Port Authorities.
- This segment is required for Response Type 962 MAF Container Instructions to Originator when Data Element 1001 equals MAF and Data Element 1131 equals 118.

Element Rules

- After business validation of consignment information Data Element 1001 will either contain WOF (indicating consignment written off) or ERR (consignment information contains an error).
- If Data Element 1001 contains "25" then elements 1131,3055,1004,1366 are not required. This is to identify MAF Container Instructions and is used for Port Authority notification only.
- For MAF Container declaration to the Originator purposes Data Element 1001 will be "MAF"
- For MAF Container declaration to the Originator purposes Data Element 1131 will be "118"

- Data Element 1004 will contain the unique sequential number allocated given to a consignment by the original transmitter of the ECI.
- Data Element 1366 will contain the Bill Number for the consignment.

Example Syntax

DOC+WOF:148:143+nnnn::nnnnnnnnnnnnnnnn'	Consignment written-off
DOC+25'	Container Instructions to Port Company
DOC+MAF:118:143+1::BM0000000000000001'	Consignment Instructions to Originator

CUSRES	ECI REPORT	GROUP 6
---------------	-------------------	----------------

FTX FREE TEXT

Function To provide free form or coded text information.

Element Code and Name		Format	Value	Meaning	Usage
4451	TEXT SUBJECT QUALIFIER	M an..3	ICN	Customs Instructions	R
			QIN	Quarantine Instructions	
4453	TEXT FUNCTION, CODED	C an..3		NOT USED	X
C107	TEXT REFERENCE	C		NOT USED	X
4441	Free text, coded	M an..3		NOT USED	X
1131	Code list qualifier	C an..3		NOT USED	X
3055	Code list responsible agency, coded	C an..3		NOT USED	X
C108	TEXT LITERAL	C			R
4440	Free text	M an..70	an..70	Remarks	R
4440	Free text	C an..70	an..70	“	O
4440	Free text	C an..70	an..70	“	O
4440	Free text	C an..70	an..40	“	O
4440	Free text	C an..70		NOT USED	X
3453	LANGUAGE, CODED	C an..3		NOT USED	X

Segment Rules

- This segment will be required for Response Type 962 to a Port Authority containing MAF Instructions, when the ECI status in the GIS segment is 855.
- This segment will be required for Response Type 962 to the Originator containing MAF Instructions, when the ECI status in the GIS segment is 856.

Element Rules

- Data Element 4451 will be mandatory and will always be QIN.
- At least one instance of Data Element 4440 will be required, with the remaining being optional.

Example Syntax

FTX+QIN+++nnn...nnn (70):nnn...nnn (70)' Two lines of MAF Consignment instructions.

CUSRES	ECI REPORT	GROUP 6
---------------	-------------------	----------------

EQD EQUIPMENT DETAILS

Function : **To identify a unit of equipment.**

Element Code and Name		Format	Value	Meaning	Usage
8053	EQUIPMENT QUALIFIER	M an..3	CN	Container	R
C237	EQUIPMENT IDENTIFICATION	C			
8260	Equipment identification number	C an..17	an..17	Container Number	R
1131	Code list qualifier	C an..3		NOT USED	
3055	Code list responsible agency, coded	C an..3		NOT USED	
3207	Country, coded	C an..3		NOT USED	
C224	EQUIPMENT SIZE AND TYPE	C			X
8155	Equipment size and type identification	C an..10		NOT USED	
1131	Code list qualifier	C an..3		NOT USED	
3055	Code list responsible agency, coded	C an..3		NOT USED	
8154	Equipment size and type	C an..35		NOT USED	
8077	EQUIPMENT SUPPLIER, CODED	C an..3		NOT USED	X
8249	EQUIPMENT STATUS, CODED	C an..3		NOT USED	X
8169	FULL/EMPTY INDICATOR, CODED	C an..3		Container Status ;-	D
			4	Empty	
			5	Full Load	
			7	Less than Container Load	
			8	Bulk Consignment	

Segment Rules

- This segment will be required for Response Type 962 or Response Type 932 to a Port Authority.
- This segment is not required for Response Type 962 to the Originator.

Element Rules

- Data Element 8053 will contain CN
- Data Element 8260 will contain a container number.
- Data Element 8169 will specify the status of a container.

Example Syntax

EQD+CN+nnnnnnnnnnnnnnnnnnnn++++5' Full Container Load

CUSRES	CONSIGNMENT ERROR REPORT	GROUP 13
---------------	---------------------------------	-----------------

ERP ERROR POINT DETAILS

Function : **A segment to identify the location of an application error within a message.**

Element Code and Name		Format	Value	Meaning	Usage	
C701	ERROR POINT DETAILS	C			R	
1049	Message section, coded	C	an..3	1	Consignment Header Details	R
				2	Goods Item Details	
1052	Message item number	C	an..35	an..3	Goods Item Number	D
1054	Message sub-item number	C	n..6	n..3	Field Number	R
C853	ERROR SEGMENT POINT DETAILS	C				X
9166	Segment tag	C	an..3		NOT USED	X
1030	Sequence number	C	an..10		NOT USED	X
1159	Sequence number source, coded	C	an..3		NOT USED	X

Segment Rules

- Up to 99 segments will be included, one for each error, for Response Type 932 (ECI Write-Off Report) or Response Type 962 (MAF Container Instructions to Originator)

Element Rules

- Data Element 1049 will contain the part of the consignment in error. When the error is in the consignment header details, the value will be 1. When the error is in the Goods Item details the value will be 2.
- Data Element 1052 will only be specified when the error occurred in the Goods Item details.
- Data Element 1054 will be include the field number (see code list), where the error is applicable to.

Example Syntax

ERP+1::nnn' An error has occurred in the consignment header details.
ERP+2::nnn:nnn An error has occurred in the goods item details.

CUSRES	CONSIGNMENT ERROR REPORT	GROUP 13
---------------	---------------------------------	-----------------

ERC APPLICATION ERROR INFORMATION

Function : **To identify the type of application error within a message.**

Element Code and Name	Format	Value	Meaning	Usage
C901 APPLICATION ERROR DETAIL	M			R
9321 Application error, coded	M an..3	n3	Error Code	R
1131 Code list qualifier	C an..3		NOT USED	X
3055 Code list responsible agency, coded	C an..3	143	NZCS	R

Segment Rules

- This segment will always immediately follow an ERP segment, for Response Type 932 (ECI Acceptance Report) or Response Type 962 (MAF Container Instructions to Originator)

Element Rules

- Data Element 9321 will contain an error code describing the error (see code list).
- Data Element 3055 will always contain 143.

Example Syntax

ERC+nnn::143' Error Code

CUSRES	SUMMARY INFORMATION	SUMMARY
---------------	----------------------------	----------------

CNT CONTROL TOTAL

Function : To provide control total.

Element Code and Name	Format	Value	Meaning	Usage
C270 CONTROL	M			R
6069 Control qualifier	M an..3	10	Total Number of Consignments Written-Off	R
6066 Control value	M n..18	n..4	Total Count	R
6411 Measure unit qualifier	C an..3		NOT USED	X

Segment Rules

- This segment will be mandatory when the Response Type is 932 (ECI Acceptance Report).

Element Rules

- Data Element 6066 will contain the total number of consignments contained within the ECI Acceptance Report. Note that this total could be zero, but the response should still be used as an acknowledgement of receipt.

Example Syntax

CNT+10:nnnn' Total number of consignments written off

CUSRES	END OF MESSAGE	MESSAGE
---------------	-----------------------	----------------

UNT MESSAGE TRAILER

Function : **To end and check the completeness of a message.**

Element Code and Name	Format	Value	Meaning	Usage
0074 NUMBER OF SEGMENTS IN A MESSAGE	M n..6	n..6	Number of Segments	R
0062 MESSAGE REFERENCE NUMBER	M an..14	an..14	Transaction Number	R

Segment Rules

- This segment will be mandatory for all transaction types.

Element Rules

- Data Element 0074 will contain the total number of segments within message.
- Data Element 0062 will be a unique sequential number for each transaction transmitted to NZCS, which will be the same as that stated in the corresponding UNH segment at the start of the transaction.

Example Syntax

UNT+nnnnnn+nnnnnnnnnnnn'

CUSRES	END OF INTERCHANGE	INTERCHANGE
---------------	---------------------------	--------------------

UNZ INTERCHANGE TRAILER

Function : To end and check the completeness of an interchange.

Element Code and Name	Format	Value	Meaning	Usage
0036 INTERCHANGE CONTROL COUNT	M n..6	n..6	Number of Messages	R
0020 INTERCHANGE CONTROL REFERENCE	M an..14	an..14	Interchange Reference	R

Segment Rules

- This segment will be mandatory for all interchanges.

Element Rules

- Data Element 0036 will be contain the total number of messages (i.e. ECI entries or ECI adjustments) within the interchange.
- Data Element 0020 will be contain a unique reference to identify the interchange for tracking purposes, which will be the same as the reference stated in the corresponding UNB segment.

Example Syntax

UNZ+nnnnnn+nnnnnnnnnnnn'

4.5 Data Mapping Matrix

The following pages provide a summary of the data mapping requirements by transaction type. This can be used as a checklist for all response types.

Group	Segment	Field	Response Type 932	Response Type 962	Response Type 963	Response Type 965
Interchange	UNA		R	R	R	R
	UNB	NZCS System Id	R	R	R	R
		Trading Partner Code	R	R	R	R
		Date of Preparation	R	R	R	R
		Time of Preparation	R	R	R	R
		Interchange Reference	R	R	R	R
Header	UNH	Transaction Number	R	R	R	R
		Carrier Reference Number	R	R	R	R
	BGM	Response Type	R	R	R	R
		ECI Number	R	R	R	R
		ECI Version	D	D		
	FTX	Customs Instructions		D		
	TDT	Craft Name	D	D		
		Transport Mode	D	D		
		Voyage Number	D	D		
	GIS	ECI Status	R	R	R	R
Group 4	ERP	Error Section			R	
		Error Container			D	
		Error Field			R	
	ERC	Error Code			R	
Group 6	DOC	Consignment Number	D	D		
		Consignment Reference	D	D		
	FTX	Customs/MAF Instruction		D		
	EQD	Container Number	D	D		
		Container Status	D	D		
Group 12	ERP	Error Section	D	D		
		Error Goods Item	D	D		
		Error Field	D	D		
	ERC	Error Code	D	D		
	CNT	Total Consignments Written Off	D			
Ungrouped	UNT	Number of Segments	R	R	R	R
		Transaction Number	R	R	R	R
	UNZ	Number of Messages	R	R	R	R
		Interchange Reference	R	R	R	R

4.6 *Delivery Order Layouts*

The following pages show the layouts of both the Import and Export ECI delivery orders. These can only be produced on receipt of a response type 932 for consignments that have been written off i.e. DOC+WOF.

New Zealand Customs Service

Import ECI Delivery Order

ECI Number 99999999

Client Reference XXXXXXXXXXXXXXXX

Consignment Number 1111

Consignee XX

Broker XX

Craft/ Flight no / XX

Voyage Number XXXXXXXX

Port of Discharge XXXXXXXXXXXXXXXX

Shipping Details

Bill Number	Container Number	Container Status	Number of Packages
XXXXXXXXXXXX	XXXXXXXXXXXX	XXXX	99999999

Customs Delivery Instructions

Deliver XX

WARNING

IT IS AN OFFENCE TO REMOVE / DELIVER THESE GOODS OTHER THAN IN ACCORDANCE WITH THE CUSTOMS DELIVERY INSTRUCTIONS HEREIN

New Zealand Customs Service

Export ECI Delivery Order

ECI Number 99999999

Client Reference XXXXXXXXXXXXXXXX

Consignment Number 1111

Consignor XX

Broker XX

Craft/ Flight no / XX

Voyage Number XXXXXXXX

Port of Loading XXXXXXXXXXXXXXXX

Shipping Details

Bill Number	Container Number	Container Status	Number of Packages
XXXXXXXXXXXX	XXXXXXXXXXXX	XXXX	99999999

Customs Delivery Instructions

Deliver XX

WARNING

IT IS AN OFFENCE TO REMOVE / DELIVER THESE GOODS OTHER THAN IN ACCORDANCE WITH THE CUSTOMS DELIVERY INSTRUCTIONS HEREIN

5. CODE LISTS AS USED BY NZCS

0001 Syntax identifier

UNOA UN/ECE Level A

0002 Syntax version number

2 Version Two

0004 Sender identification

CLIENT NZCS Allocated Client Code (also Trading Partner code)
CUSMOD NZCS System

0007 Partner identification code qualifier

ZZZ Mutually defined

0010 Recipient identification

CLIENT NZCS Allocated Client Code (also Trading Partner code)
CUSMOD NZCS System

0051 Controlling agency

UN UN/ECE/TRADE/WP.4, Universal Standard messages (UNSM)

0052 Message Version Number

D Message Version (CUSCAR & CUSRES)

0054 Message Release Number

98A Release Number (CUSCAR & CUSRES)

0065 Message Type Identifier

CUSCAR Customs Cargo Report Message
CUSRES Customs Response Message

1001 Document/message name, coded

Class
785 ECI

Response Type
932 ECI Acceptance Report
962 Inspections/Audit Requirements
963 ECI Rejection Report
965 Confirmation of Adjustment
ERR Consignment Error
HLD Consignment Held
WOF Consignment Write Off
25 Container Instructions to Port
MAF MAF Container Instructions to Originator

1049 Message section, coded

- 1 ECI Header Details or Consignment Header Details
- 2 Container List or Goods Item Details

1054 Message sub-item numberField Number

- 1 Transaction Number
- 3 Class of Entry
- 4 Transaction Type
- 15 ECI Number
- 44 Carrier Reference Number
- 80 Craft/Flight No.
- 81 Transport Mode
- 90 Port of Loading
- 95 Port of Discharge
- 170 Remarks
- 300 Bill/Parcel Number
- 301 Container Number
- 302 Container Status
- 303 Number of Packages
- 304 Type of Package
- 355 Goods Description
- 400 Currency Code
- 405 Value in Currency
- 430 Country of Origin
- 500 Total Consignments
- 505 Date of Arrival / Departure
- 510 Full/Part Manifest Indicator
- 515 Port of Arrival / Departure
- 520 Consignment Number
- 525 Carrier Code
- 530 Carrier Name
- 535 Consolidator Name
- 540 Total Containers
- 545 Consignee Name
- 550 Consignor Name
- 555 Contact Party Name
- 560 Consignee Address
- 565 Consignor Address
- 570 Contact Party Address
- 575 Goods Item Number
- 580 Gross Weight
- 610 ECI Type
- 615 Place of Final Delivery
- 620 Place of Transshipment
- 625 Port of Delivery
- 630 Container Size/Type Code
- 635 Attached Equipment Indicator
- 640 Quarantine Indicator
- 645 Prohibited Packaging Indicator
- 650 Dangerous Goods Code
- 655 Dangerous Goods Number
- 660 Flashpoint
- 665 Place of Origin

670	Container Pack Location
675	Vehicle Identification Number
680	Value in NZ Dollars
685	Level 1 Cargo Type
690	Level 1 Material Code
695	Level 2 Cargo Type
700	Level 2 Package Type
705	Level 2 Material Code
710	Level 3 Cargo Type
715	Level 3 Package Type
720	Level 3 Material Code

1131 Code list qualifier

63	Attached Equipment Indicator
67	Prohibited Packaging Indicator
118	Quarantine Code
109	Full/Part Manifest Indicator
120	Customs Status of Goods
148	Customs Release Notification
ZZZ	Mutually Defined (e.g. Client Codes etc.)

1153 Reference qualifier

BM	Bill of Lading
HWB	House Waybill
MB	Master Bill

1225 Message function, coded

1	Cancel ECI
2	Add Consignment
3	Cancel Consignment
9	Original
20	Replace Header Details
21	Replace Consignment

2005 Date/time/period qualifier

132	Date of Arrival
-----	-----------------

2379 Date/time/period format qualifier

102	CCYYMMDD
-----	----------

3035 Party qualifier

CA	Carrier
CS	Consolidator
CN	Consignee
CZ	Consignor
PK	Contact Party

3055 Code list, responsible agency, coded

143 New Zealand Custom

3225 Place/location identification

Ports of Arrival, Departure, Discharge, Loading, Delivery, Final Delivery and Countries of Origin

The full UN/EDIFACT location code list is available at:

<http://www.unece.org/cefact/locode/service/location.htm>

The full UN/EDIFACT country code list is available at:

<http://www.unece.org/cefact/locode/service/country.htm>

3227 Place/location qualifier

4	Place of Origin
7	Port of Delivery
9	Port of Loading
11	Port of Discharge
13	Place of Transshipment
22	Port of Arrival
27	Country of Origin
83	Place of Final Delivery
107	Container Pack Location

4451 Text subject qualifier

AAA	Goods Description
AAI	General Information
ICN	Customs Instructions
PAC	Vehicle Identification Number
QIN	Quarantine Instructions

5025 Monetary amount type qualifier

14	Value in Currency
----	-------------------

6069 Control qualifier

10	Total Consignments
16	Total Containers

6311 Measurement application qualifier

WT	Weight
----	--------

6313 Measurement dimension, coded

AAG	Gross Weight (Item Level)
-----	---------------------------

6345 Currency, coded

AUD	Australia - Dollar
CAD	Canada - Dollar
CHF	Switzerland - Franc
CLP	Chile - Peso
CNY	China - Renminbi or Yuan
DKK	Denmark - Krone
EGP	Egypt - Egyptian Pound
EUR	European Union - Euro
FJD	Fiji - Fijian Dollar
GBP	United Kingdom - Pound
HKD	Hong Kong - Hong Kong Dollar
ILS	Israel - Shekel
INR	India - Rupee
JMD	Jamaica - Jamaican Dollar
JPY	Japan - Yen
KRW	Korea - Won
LKR	Sri Lanka - Rupee
MXN	Mexico - Peso
NZD	New Zealand Dollar
NOK	Norway - Krone
PGK	Papua New Guinea - Kina
PHP	Phillippines - Peso
PKR	Pakistan - Rupee
SEK	Sweden - Krona
SGD	Singapore - Singapore Dollar
THB	Thailand - Baht
TOP	Tonga - Pa'anga
TRL	Turkey - Lira
TWD	Taiwan - Taiwanese Dollar
USD	USA - Dollar
WST	Western Samoa - Tala
XPF	French Polynesia - French Polynesian Franc
ZAR	South Africa - Rand

6411 Measurement unit qualifier

KGM, KG	Kilograms
CEL	Celsius

7065 Types of packages identificationTwo-Alpha Codes

The full UN package codes is available at:

http://www.unece.org/cefact/recommendations/rec21/rec21_rev6e_2008.xls

Four-Digit Codes

Digit 1 - Cargo Type

0	No cargo unit (liquid bulk)
1	No cargo unit (solid bulk)
2	Large freight containers
3	Other freight containers
4	Palletised
5	Pre-slung

- 6 Mobile self-propelled units
- 7 Other mobile units
- 9 Other cargo types

Digits 2 & 3 - Numeric Package Type Code

- 00 Unpacked or unpackaged
- 01 Bulk - fine particles
- 02 Bulk - granular particles
- 03 Bulk - large particles
- 04 Bulk - liquid
- 05 Bulk - liquefied gas
- 06 Bulk - gas
- 11 Loose - cylinder, long, hollow
- 12 Loose - cylinder, long, solid
- 13 Loose - cylinder, hollow flat
- 14 Loose - cylinder, hollow linear
- 15 Loose - rectangle, superficial
- 16 Loose - rectangular, linear
- 17 Loose - rectangular, dense
- 21 Box -complete, very small
- 22 Box - complete, small
- 23 Box - complete, medium
- 24 Box - complete, large
- 25 Box - complete, v/large
- 26 Box - incomplete, skeletal
- 27 Box - incomplete on top
- 29 Box - incomplete, divisions
- 31 Drum - very small
- 32 Drum - small
- 33 Drum - medium
- 34 Drum - large
- 35 Drum - very large
- 41 Bulb - very small, wide open
- 42 Bulb - small, narrow opening
- 43 Bulb - medium, narrow opening
- 44 Bulb - large, truncated end
- 45 Bulb - v/large, truncated end
- 51 Cone, truncated, with handle
- 54 Parallel piped, coffin
- 61 Bag - complete, very small
- 62 Bag - complete, small
- 63 Bag - complete, medium
- 64 Bag - complete, large
- 65 Bag - complete, very large
- 66 Bag - incomplete, open mesh
- 67 Bag - Sheet, superimposed
- 91 Cylinder with rims, wound

Digit 4 - Packaging Material Code

- 0 None
- 1 Plastics
- 2 Paper and fibreboard
- 3 Wood
- 5 Metal
- 6 Glass, porcelain, ceramic etc.
- 7 Textile

9 Unknown or not enumerated

7365 Processing indicator, coded

ECI Type

10 Import
40 Export

Full/Part Manifest Indicator

Y Full Shipment
N Part Shipment

Attached Equipment Indicator

Y Equipment is attached
N Equipment is not attached

Prohibited Packaging Indicator

Y Prohibited packaging has been used
N No prohibited packaging has been used

Quarantine Indicator

C Container has been cleaned
F Container has been fumigated
B Container has been both cleaned and fumigated

Response Indicator

805 Customs instructions as specified
830 Adjustment accepted
841 ECI rejected, error report attached
842 ECI Received OK, consignments have been written off
843 ECI Received with errors, some consignments may have been written off
844 ECI received OK, no consignments were written off
846 ECI Export Clearance Port Notification
849 Cancel ECI Export Clearance Port Notification
850 ECI Tranship Clearance Port Notification
851 Cancel ECI Tranship Clearance Port Notification
855 MAF instructions as specified to Port Company
856 MAF instructions as specified to Originator
857 MAF container cancellation advice to Port Company
858 Customs Translation Processing Error

8051 Transport stage qualifier

20 Main Carriage Transport

8053 Equipment qualifier

CN Container

8067 Mode of transport, coded

1 Sea
4 Air

8155 Equipment size and type identification

1	Dime coated tank
2	Epoxy coated tank
3	IMO1
4	IMO2
5	IMO3
6	Pressurized tank
7	Refrigerated tank
8	Semi-refrigerated
9	Stainless steel tank
10	Nonworking reefer 40 ft
11	Box pallet
12	Europallet
13	Scandinavian pallet
14	Trailer
15	Nonworking reefer 20 ft
16	Exchangeable pallet
17	Semi-trailer
18	Tank container 20 ft.
19	Tank container 30 ft.
20	Tank container 40 ft.
21	Container General Purpose 20 ft.
22	Container General Purpose 30 ft.
23	Container General Purpose 40 ft.
24	Refrigerator tank 20 ft.
25	Refrigerator tank 30 ft.
26	Refrigerator tank 40 ft.
27	Tank container IC 20 ft.
28	Tank container IC 30 ft.
29	Tank container IC 40 ft.
30	Refrigerator tank IC 20 ft.
31	Temperature controlled 30 ft
32	Refrigerator tank IC 40 ft.
33	Movable case: L < 6,15m
34	Movable case: 6,15m<L<7,82m
35	Movable case: 7,82m<L<9,15m
36	Movable case: 9,15m<L<10,90m
37	Movable case: 10,90m<L< 13,75m
38	Totebin
39	Temperature controlled 20 ft
40	Temperature controlled 40 ft
41	Nonworking reefer 30 ft
42	Dual trailers

8169 Full/empty container, coded

4	Empty
5	Full Load
7	Less Than Full Container Load

8 Bulk Consignment

8212 Craft name and Flight numbers

A full list of valid craft names and flight numbers is available at:

<http://www.customs.govt.nz/exporters/customs+requirements/craft+name+and+flight+number.asp>

9321 Application error identification

101	Flight No. : Not specified
102	Craft Name : Not specified
103	Transport Mode : Not specified or invalid
110	Port of Discharge : Not specified or invalid
111	Port of Loading : Not specified or invalid
112	Voyage No : Not specified
148	Carrier Name : Not specified
153	Country of Origin : Not specified or invalid
156	Country of Origin : Not current
173	Value in Currency : Not specified or invalid
186	Bill Type : Not specified or Invalid
187	Bill Number : Not specified or invalid
188	Number of Packages : Not specified or invalid
189	Type of Package : Not specified or invalid
205	Unit of Measurement : Invalid
207	Unit Quantity : Invalid
458	Currency Code : Not specified or invalid
462	Voyage Number : Not required for air
481	Container Number : Not specified or invalid
482	Container Status : Not specified or invalid
486	Port of Loading : Not current
487	Client Reference Number : Duplicates not allowed
491	Port of Arrival / Departure : Not specified or invalid
492	Port of Arrival / Departure : Not current
522	Date of Arrival / Departure : Not specified or invalid
524	Total Containers : The number of containers does not match total specified
525	Total Consignments : The number of consignments received does not match total specified
544	Port of Discharge : Not current
556	Goods Description : Not specified
558	Client Reference Number : Not specified
582	Number of Packages : Only one package expected for bulk consignment
601	Transaction Number : Not specified or invalid
602	Class : Not specified or invalid
604	Transaction Type : Not specified or invalid
609	ECI Type : Not specified or invalid
618	Client Reference Number: Not the same as the quoted on original
621	Consignment Number : Consignment does not exist - cannot be replaced
622	Consignment Number : Consignment does not exist - cannot be cancelled
623	Consignment Number : Consignment already exists
624	Consignment Number : Consignment already cancelled
625	ECI Number : Not specified or invalid
626	Transaction Type : No original ECI to adjust
627	Transaction Type : ECI already cancelled
628	Transaction Type : ECI only has one consignment - cannot be cancelled
632	Consignee Name : Not specified
633	Consignor Name : Not specified
634	Consignee Address : Not specified
635	Consignor Address : Not specified
640	Goods Item Number : Not specified or invalid
641	Goods Item Number : Not unique

650	Part Full Manifest Indicator : Not specified or invalid
651	Container Number : Container number not within container list
653	Place of Final Delivery : Not specified or invalid
654	Place of Final Delivery : Not current
655	Place of Transshipment : Not specified or invalid
656	Place of Transshipment : Not current
657	Port of Delivery : Not specified or invalid
658	Port of Delivery : Not current
659	Container Size/Type Code : Not specified or invalid
660	Attached Equipment Indicator : Must be 'Y' or 'N'
661	Quarantine Indicator : Not specified or invalid
662	Prohibited Packaging Indicator : Must be 'Y' or 'N'
663	Place of Origin : Not specified or invalid
664	Place of Origin : Not current
665	Container Pack Location : Not specified or invalid
666	Container Pack Location : Not current
667	Type of Package : Invalid Cargo Type
668	Type of Package : Invalid Packaging Material
671	Date of Arrival : ECI lodged too many days prior to import
672	Date of Arrival : ECI lodged too many days after import
673	Date of Departure : ECI lodged too many days prior to export
674	Date of Departure : ECI lodged too many days after export
675	Container Number : Invalid format
676	Craft Name : Not on file (Sea)
677	Flight No. : Not on file (Air)
692	Goods Description : MAF container release ECIs must show "MAF CONTAINER MOVEMENT REQUEST"
695	ECI must contain at least one consignment and one goods item
697	Other Information Code : MOU specified not for this Client Code
997	Customs Translation Processing Error - Broken Twice in pipe
998	Customs Translation Processing Error - EDI Interface failures
999	Customs Translation Processing Error - EDI translation failure

6. EXAMPLE SYNTAX

6.1 Customs Cargo Report (CUSCAR)

6.1.1 Original ECI - Cargo Report

UNA:+.? '	
UNB+UNOA:2+00009501L:ZZZ+CUSMOD:ZZZ+040910:1914+IRN000601'	Interchange Reference number
UNH+TRN58000101+CUSCAR:D:98A:UN'	Transaction Reference number
BGM+785+SRN56788+9'	Senders Reference number Original ECI
NAD+CA++CH SHIPPING NEW ZEALAND LTD'	Carrier Name
TDT+20+330E+1+++++:::KAPITAN KONEV'	Voyage No., Transport Mode Craft Name
LOC+22+NZCHC'	Port of Arrival
DTM+132:20040712:102'	Date of Arrival
GIS+10:105:143'	ECI Type Import
GIS+N:109:143'	Full/Part Manifest Indicator
EQD+CN+CRLU3149719+39+++5'	Container 1, Temp Controlled 20ft, FCL
GIS+N:63:143'	Attached Equipment Indicator
GIS+N:67:143'	Prohibited Packaging Indicator
GIS+C:118:143'	Quarantine Code, Cleaned
EQD+CN+SUDU3700898+21+++7'	Container 2, General Purpose 20 ft LCL
GIS+N:63:143'	Attached Equipment Indicator
GIS+N:67:143'	Prohibited Packaging Indicator
GIS+F:118:143'	Quarantine Code, Fumigated
EQD+CN+CAXU6182170+21+++5'	Container 3 (20ft GP, FCL)
GIS+N:63:143'	Attached Equipment Indicator
GIS+N:67:143'	Prohibited Packaging Indicator
GIS+C:118:143'	Quarantine Code, Cleaned
EQD+CN+GATU0753702+21+++5'	Container 4 (20ft GP, FCL)
GIS+N:63:143'	Attached Equipment Indicator
GIS+N:67:143'	Prohibited Packaging Indicator
GIS+C:118:143'	Quarantine Code, Cleaned
EQD+CN+SUDU3378781+21+++5'	Container 5 (20ft GP, FCL)
GIS+N:63:143'	Attached Equipment Indicator
GIS+N:67:143'	Prohibited Packaging Indicator
GIS+C:118:143'	Quarantine Code
EQD+CN+TTNU2532422+21+++5'	Container 6 (20ft GP, FCL)
GIS+N:63:143'	Attached Equipment Indicator
GIS+N:67:143'	Prohibited Packaging Indicator
GIS+C:118:143'	Quarantine Code
CNT+10:4'	Total Consignments
CNT+16:6'	Total Containers
CNI+1'	Consignment Number 1
RFF+BM:309007465950'	Bill Type, Bill Number
LOC+9+AUBNE'	Port of Loading
LOC+11+NZLYT'	Port of Discharge
NAD+CZ++SUPERTOM PTY LTD:PO BOX 17:BRISBANE QLD 4106'	Consignor Name and Address
NAD+CN++PRODUCE WORLD:16 FIELD RD:CHRISTCHURCH'	Consignee Name and Address
GID+1+1185:CT'	Goods Item Number, Number

	and Type of packages
FTX+AAA+++X 10KG CHILLED TOMATOES'	Goods Description
MEA+WT+AAG+KGM:14870.000'	Gross Weight (Item Level)
SGP+CRLU3149719'	Container Number
CNI+2'	Consignment Number 2
RFF+BM:309007465952'	Bill Type, Bill Number
LOC+9+AUBNE'	Port of Loading
LOC+11+NZLYT'	Port of Discharge
NAD+CZ++INTEGRATION SERVICES PTY LTD:6 ALIGATOR PLACE:BRISBANE'	Consignor Name and Address
NAD+CN++OCEAN FREIGHT LIMITED:1A NORWICH CRESCENT:CHRISTCHURCH'	Consignee Name and Address
NAD+PK++OCEAN FREIGHT LIMITED:1A NORWICH CRESCENT:CHRISTCHURCH'	Notify Party Name and Address
GID+1+63:PK'	Goods Item Number, Number and Type of packages
FTX+AAA+++63 PIECES GENERAL FAK CARGO'	Goods Description
MEA+WT+AAG+KGM:6618.000'	Gross Weight (Item Level)
SGP+SUDU3700898'	Container Number
CNI+3'	Consignment Number 3
RFF+BM:309007465953'	Bill Type and Bill Number
LOC+9+AUBNE'	Port of Loading
LOC+11+NZLYT'	Port of Discharge
NAD+CZ++AIR SEA PTY LTD:49 GOLF AVENUE:EAGLE FARM QLD 4009'	Consignor Name and Address
NAD+CN++CARGO CONTROL LTD:PO BOX 614:AUCKLAND'	Consignee Name and Address
NAD+PK++CARGO CONTROL LTD:PO BOX 614:AUCKLAND:PH?: 64 9 777 8888 FX?: 64 9 777 6666'	Notify Party Name and Address
GID+1+20:PK'	Goods Item 1, Number and type of packages
FTX+AAA+++BRICKS'	Goods Description
MEA+WT+AAG+KGM:21300.000'	Gross Weight (Item Level)
SGP+CAXU6182170'	Container Number
GID+2+20:PK'	Goods Item 2, Number and type of packages
FTX+AAA+++BRICKS'	Goods Description
MEA+WT+AAG+KGM:21300.000'	Gross Weight (Item Level)
SGP+GATU0753702'	Container Number
GID+3+20:PK'	Goods Item 3, Number and type of packages
FTX+AAA+++BRICKS'	Goods Description
MEA+WT+AAG+KGM:21300.000'	Gross Weight (Item Level)
SGP+SUDU3378781'	Container Number
CNI+4'	Consignment Number 4
RFF+BM:309007465954'	Bill Type and Bill Number
LOC+9+AUBNE'	Port of Loading
LOC+11+NZLYT'	Port of Discharge
NAD+CZ++AUSTRALIA CARS PTY LTD:10 RIVER PLACE:MORNINGTON QLD 4170'	Consignor Name and Address
NAD+CN++CAR WORLD LTD:123 COLEMANS ROAD: WOOLSTON'	Consignee Name and Address
GID+1+1:VE'	Goods Item Number, Number and Type of packages
FTX+AAA+++USED FORD FALCON'	Goods Description
FTX+PAC+++ABCD1234567GUN'	Vehicle identification number
MEA+WT+AAG+KGM:3000.000'	Gross Weight (Item Level)
SGP+TTNU2532422'	Container Number
UNT+86+TRN58000101'	Transaction Reference number
UNZ+1+IRN000601'	Interchange Reference number

6.1.2 Original ECI - Write-off Request

UNA:+.? '	
UNB+UNOA:2+00009501L:ZZZ+CUSMOD:ZZZ+040910:0805+IRN000602'	Interchange Reference number
UNH+TRN58000102+CUSCAR:D:98A:UN'	Transaction Reference number
BGM+785+SRN34566+9'	Senders Reference number Original ECI
NAD+CA++SINGAPORE AIRLINES'	Carrier Name
NAD+CS++SPEEDY PARCEL SERVICE LTD'	Consolidator Name
TDT+20++4+++++::SQ285'	Transport Mode, Flight number
LOC+22+NZAKL'	Port of Arrival
DTM+132:20040711:102'	Date of Arrival
GIS+10:105:143'	ECI Type Import
GIS+Y:109:143'	Full/Part Manifest Indicator
CNT+10:5'	Total Consignments
CNI+1'	Consignment Number 1
RFF+HWB:SPS321728'	Bill Type, Bill Number
LOC+9+FRCDG'	Port of Loading
LOC+11+NZAKL'	Port of Discharge
LOC+13+SGSIN'	Place of Transshipment
LOC+27+FR'	Country of Origin
NAD+CN++TEXTILES INTERNATIONAL LTD:123 WEST PLACE:EAST TAMAKI:SOUTH AUCKLAND'	Consignee Name and Address
NAD+CZ++SPINNERS:RUE DES VIN:PARIS:62620 FRANCE'	Consignor Name and Address
GID+1+3:PK'	Goods Item Number, Number and Type of packages
FTX+AAA+++FABRIC SWATCHES'	Goods Description
MEA+WT+AAG+KGM:6.000'	Gross Weight (Item Level)
MOA+14:30.00:EUR'	Value, Currency
CNI+2'	Consignment Number 1
RFF+HWB:SPS990571'	Bill Type, Bill Number
LOC+9+FRCDG'	Port of Loading
LOC+11+NZAKL'	Port of Discharge
LOC+13+SGSIN'	Place of Transshipment
LOC+27+FR'	Country of Origin
NAD+CN++BOSS MUSIC NEW ZEALAND:30 ST VINCENT ST:AUCKLAND:1001 NZ'	Consignee Name and Address
NAD+CZ++BOSS MUSIC S.A.:20 RUE ST JACQUES:PARIS:75005 FR'	Consignor Name and Address
GID+1+1:PK'	Goods Item Number, Number and Type of packages
FTX+AAA+++DEMO CDS'	Goods Description
MEA+WT+AAG+KGM:0.500'	Gross Weight (Item Level)
MOA+14:10.00:EUR'	Value, Currency
CNI+3'	Consignment Number 1
RFF+HWB:SPS56QQSTT'	Bill Type, Bill Number
LOC+9+GBGLO'	Port of Loading
LOC+11+NZAKL'	Port of Discharge
LOC+13+SGSIN'	Place of Transshipment
LOC+27+GB'	Country of Origin
NAD+CN++EAST-WEST BANKING:LEVEL 3 87-89 GEORGE STREET:AUCKLAND:1001 NZ'	Consignee Name and Address
NAD+CZ++GENERAL LOGISTICS:PRINCE CHARLES AVENUE:LONDON:SW15 GB'	Consignor Name and Address
GID+1+1:PO'	Goods Item Number, Number and Type of packages
FTX+AAA+++COMPANY DOCUMENTS'	Goods Description
MEA+WT+AAG+KGM:2.100'	Gross Weight (Item Level)

MOA+14:1.00:GBP'	Value, Currency
CNI+4'	Consignment Number 1
RFF+HWB:SPS867G7NYC'	Bill Type, Bill Number
LOC+9+IESNN'	Port of Loading
LOC+11+NZAKL'	Port of Discharge
LOC+13+SGSIN'	Place of Transshipment
LOC+27+IE'	Country of Origin
NAD+CN++COMPUTER CITY:7 GATES PLACE:ADDINGTON:CHRISTCHURCH'	Consignee Name and Address
NAD+CZ++RAM SOFTWARE:15 GUINNESS WAY:WEST BUSINESS PARK:DUBLIN 12'	Consignor Name and Address
GID+1+3:BX'	Goods Item Number, Number and Type of packages
FTX+AAA+++DOCUMENTATION AND TRAINING MATERIAL'	Goods Description
MEA+WT+AAG+KGM:3.000'	Gross Weight (Item Level)
MOA+14:30.00:EUR'	Value, Currency
CNI+5'	Consignment Number 1
RFF+HWB:SPS376HBNDP'	Bill Type, Bill Number
LOC+9+ITTRV'	Port of Loading
LOC+11+NZAKL'	Port of Discharge
LOC+13+SGSIN'	Place of Transshipment
LOC+27+IT'	Country of Origin
NAD+CN++WELDERS SUPPLIES (NZ) LTD:64 HAMILTON STREET:TAURANGA:4001 NZ'	Consignee Name and Address
NAD+CZ++SELCO S.R.L.:CAVICCHIOLO:VIA MACELLO 61:ROMA:35010 ITALY'	Consignor Name and Address
GID+1+1:PK'	Goods Item Number, Number and Type of packages
FTX+AAA+++SPARE PARTS FOR WELDING MACHINES'	Goods Description
MEA+WT+AAG+KGM:2.500'	Gross Weight (Item Level)
MOA+14:148.80:EUR'	Value, Currency
UNT+71+TRN58000102'	Transaction Reference number
UNZ+1+IRN000602'	Interchange Reference number

6.1.3 Original ECI - Empty Containers

UNA:+.? '	
UNB+UNOA:2+00009501L:ZZZ+CUSMOD:ZZZ+040910:0745+IRN000603'	Interchange Reference number
UNH+TRN58000103+CUSCAR:D:98A:UN'	Transaction Reference number
BGM+785+SRN12344+9'	Senders Reference number Original ECI
NAD+CA++CWH SHIPPING'	Carrier Name
TDT+20+1942S+1+++++:::WELLINGTON STAR'	Voyage No., Transport Mode Craft Name
LOC+22+NZAKL'	Port of Arrival
DTM+132:20040910:102'	Date of Arrival
GIS+10:105:143'	ECI Type Import
GIS+Y:109:143'	Full/Part Manifest Indicator
EQD+CN+CBHU2611490+23+++4'	Container 1,(GP 40 ft, Empty)
GIS+N:63:143'	Attached Equipment Indicator
GIS+N:67:143'	Prohibited Packaging Indicator
EQD+CN+CBHU2611525+21+++4'	Container 2 (GP 20 ft, Empty)
GIS+N:63:143'	Attached Equipment Indicator
GIS+N:67:143'	Prohibited Packaging Indicator
EQD+CN+CBHU2616234+21+++4'	Container 3 (GP 20 ft, Empty)
GIS+N:63:143'	Attached Equipment Indicator
GIS+N:67:143'	Prohibited Packaging Indicator
EQD+CN+CBHU2616960+21+++4'	Container 4 (GP 20 ft, Empty)
GIS+N:63:143'	Attached Equipment Indicator
GIS+N:67:143'	Prohibited Packaging Indicator
EQD+CN+CBHU2620050+21+++4'	Container 5 (GP 20 ft, Empty)
GIS+N:63:143'	Attached Equipment Indicator
GIS+N:67:143'	Prohibited Packaging Indicator
CNT+10:1'	Total Consignments
CNT+16:5'	Total Containers
CNI+1'	Consignment Number 1
RFF+BM:CWH0026'	Bill Type, Bill Number
LOC+9+JPTYO'	Port of Loading
LOC+11+NZAKL'	Port of Discharge
NAD+CZ++CWH SHIPPING JAPAN:IINO BUILDING, 8TH FLOOR:CHIYODA-KU, TOKYO, JAPAN'	Consignor Name and Address
NAD+CN++CWH SHIPPING NEW ZEALAND:111 QUAY STREET:PO BOX 3456, AUCKLAND: NEW ZEALAND'	Consignee Name and Address
GID+1'	Goods Item Number
FTX+AAA+++EMPTY CONTAINER'	Goods Description
SGP+CBHU2611490'	Container Number
GID+2'	Goods Item Number
FTX+AAA+++EMPTY CONTAINER'	Goods Description
SGP+CBHU2611525'	Container Number
GID+3'	Goods Item Number
FTX+AAA+++EMPTY CONTAINER'	Goods Description
SGP+CBHU2616234'	Container Number
GID+4'	Goods Item Number
FTX+AAA+++EMPTY CONTAINER'	Goods Description
SGP+CBHU2616960'	Container Number
GID+5'	Goods Item Number
FTX+AAA+++EMPTY CONTAINER'	Goods Description
SGP+CBHU2620050'	Container Number
UNT+47+TRN58000103'	Transaction Reference number
UNZ+1+IRN000603'	Interchange Reference number

6.1.4 Add Consignment

UNA:+.? '	
UNB+UNOA:2+00009501L:ZZZ+CUSMOD:ZZZ+040910:1457+IRN000604'	Interchange Reference number
UNH+TRN58000104+CUSCAR:D:98A:UN+88881234'	Transaction Reference number, ECI number
BGM+785+SRN34566+2'	Senders Reference number, Add Consignment
FTX+AAI+++NEW CONSIGNMENT ADVISED BY AGENT'	Remarks
CNT+10:1'	Total Consignments
CNI+6'	New Consignment Number 6
RFF+HWB:SPS990572'	Bill Type and Bill Number
LOC+9+FRCDG'	Port of Loading
LOC+11+NZAKL'	Port of Discharge
LOC+13+SGSIN'	Place of Transshipment
LOC+27+FR'	Country of Origin
NAD+CN++BOSS MUSIC NEW ZEALAND:30 ST VINCENT ST:AUCKLAND:1001 NZ'	Consignee Name and Address
NAD+CZ++BOSS MUSIC S.A.:20 RUE ST JACQUES:PARIS:75005 FR'	Consignor Name and Address
GID+1+1:PK'	Goods Item Number, Number and Type of Packaging
FTX+AAA+++ADVERTISING MATERIAL'	Goods Description
MEA+WT+AAG+KGM:0.600'	Gross Weight (Item Level)
MOA+14:50.00:EUR'	Value, Currency
UNT+17+TRN58000104'	Transaction Reference number
UNZ+1+IRN000604'	Interchange Reference number

6.1.5 Cancel Consignment

UNA:+.? '	
UNB+UNOA:2+00009501L:ZZZ+CUSMOD:ZZZ+040910:1457+IRN000605'	Interchange Reference number
UNH+TRN58000105+CUSCAR:D:98A:UN+88881234'	Transaction Reference number ECI number
BGM+785+SRN34566+3'	Senders Reference number, Cancel Consignment
FTX+AAI+++PLEASE CANCEL THIS CONSIGNMENT'	Remarks
CNT+10:1'	Total Consignments
CNI+3'	Cancel Consignment 3
UNT+6+TRN58000105'	Transaction Reference number
UNZ+1+IRN000605'	Interchange Reference number

6.1.6 Replace Consignment –for Write-off Report

UNA:+.? '	
UNB+UNOA:2+00009501L:ZZZ+CUSMOD:ZZZ+040910:1457+IRN000606'	Interchange Reference number
UNH+TRN58000106+CUSCAR:D:98A:UN+88881234'	Transaction Reference number ECI number
BGM+785+SRN34566+21'	Replace Consignment
FTX+AAI+++AMENDED DETAILS RECEIVED FROM AGENT'	Remarks
CNT+10:1'	Total Consignments
CNI+3'	Amended Consignment Number
RFF+HWB:SPS56QQSTT'	House WayBill Number
LOC+9+GBGLO'	Port of Loading
LOC+11+NZAKL'	Port of Discharge
LOC+13+SGSIN'	Place of Transshipment
LOC+27+GB'	Country of Origin
NAD+CN++EAST-WEST BANKING:LEVEL 3 87-89 GEORGE STREET:AUCKLAND:1001 NZ'	Consignor Name and Address
NAD+CZ++GENERAL LOGISTICS:PRINCE CHARLES AVENUE:LONDON:SW15 GB'	Consignee Name and Address
GID+1+2:PO'	Goods Item Number, Number and Type of Packaging
FTX+AAA+++COMPANY DOCUMENTS'	Goods Description
MEA+WT+AAG+KGM:4.200'	Gross Weight (Item Level)
MOA+14:2.00:GBP'	Value, Currency
UNT+17+TRN58000106'	Transaction Reference number
UNZ+1+IRN000606'	Interchange Reference number

6.1.7 Replace Header Details – for Empty Containers

UNA:+.? '	
UNB+UNOA:2+00009501L:ZZZ+CUSMOD:ZZZ+040910:0745+IRN000607'	Interchange Reference number
UNH+TRN58000107+CUSCAR:D:98A:UN+88881234'	Transaction Reference number ECI number
BGM+785+SRN12344+20'	Replace Header
NAD+CA++CWH SHIPPING'	Carrier Name
FTX+AAI+++CHANGE OF SHIP'	Remarks
TDT+20+23S+1+++++:::AOTEA'	Transport Mode, Voyage No. and Craft Name
LOC+22+NZAKL'	Port of Arrival
DTM+132:20040910:102'	Date of Arrival
GIS+10:105:143'	ECI Type
GIS+Y:109:143'	Full/Part Manifest Indicator
EQD+CN+CBHU2611490+39+++4'	Container 1, Temp Controlled 20ft, Empty
GIS+N:63:143'	Attached Equipment Indicator
GIS+N:67:143'	Prohibited Packaging Indicator
EQD+CN+CBHU2611525+21+++4'	Container 2 (GP 20 ft, Empty)
GIS+N:63:143'	Attached Equipment Indicator
GIS+N:67:143'	Prohibited Packaging Indicator
EQD+CN+CBHU2616234+21+++4'	Container 3 (GP 20 ft, Empty)
GIS+N:63:143'	Attached Equipment Indicator
GIS+N:67:143'	Prohibited Packaging Indicator
EQD+CN+CBHU2616960+21+++4'	Container 4 (GP 20 ft, Empty)
GIS+N:63:143'	Attached Equipment Indicator
GIS+N:67:143'	Prohibited Packaging Indicator
EQD+CN+CBHU2620050+21+++4'	Container 5 (GP 20 ft, Empty)
GIS+N:63:143'	Attached Equipment Indicator
GIS+N:67:143'	Prohibited Packaging Indicator
CNT+16:5'	Total Containers
UNT+26+TRN58000107'	Transaction Reference number
UNZ+1+IRN000607'	Interchange Reference number

6.1.8 Cancel ECI

UNA:+.?'	
UNB+UNOA:2+12345600A:ZZZ+CUSMOD:ZZZ+040910:1200+IRN000608'	Interchange Reference number
UNH+TRN58000108+CUSCAR:D:98A:UN+77772345'	Transaction Reference number ECI number
BGM+785+SRN56788+1'	Senders Reference, Cancel ECI
FTX+AAI+++PLEASE CANCEL THIS ECI'	Remarks
UNT+4+TRN58000108'	Transaction Reference number
UNZ+1+IRN000608'	Interchange Reference number

6.2 Application Responses (CUSRES)

6.2.1 ECI Rejection Report

UNA:+.?’	
UNB+UNOA:2+CUSMOD:ZZZ+12345600A:ZZZ+040910:1325+IRN00098765’	Interchange Reference number
UNH+TRN000123+CUSRES:D:98A:UN+SRN0000101’	Transaction Reference number, Senders Reference number
BGM+963+88885678’	ECI Rejection Report, ECI number
GIS+841:120:143’	ECI Rejected, error report attached
ERP+1::80’	Craft/Flight No in Header
ERC+101::143’	Flight No. : Not Specified
ERP+2::301’	Container No in Container List
ERC+481::143’	Container Number : Not Specified
UNT+8+TRN000123’	Transaction Reference number
UNZ+1+IRN00098765’	Interchange Reference number

6.2.2 ECI Received OK, consignments have been written off

UNA:+.?’	
UNB+UNOA:2+CUSMOD:ZZZ+12345600A:ZZZ+040910:1325+IRN00098766’	Interchange Reference number
UNH+TRN000124+CUSRES:D:98A:UN+SRN0000102’	Transaction Reference number, Senders Reference number
BGM+932+99996789’	ECI Write-Off Report ECI Number
GIS+842:120:143’	Write-off report, without errors
DOC+WOF:148:143+1::BM000000001’	Consignment write off Consignment number Bill number
CNT+10:1’	Total consignments written off
UNT+6+TRN000124’	Transaction Reference number
UNZ+1+IRN00098766’	Interchange Reference number

6.2.3 ECI Received with errors, some consignments may have been written off

UNA:+.?’	
UNB+UNOA:2+CUSMOD:ZZZ+12345600A:ZZZ+040910:1325+IRN00098767’	Interchange Reference number
UNH+TRN000125+CUSRES:D:98A:UN+SRN0000103’	Transaction Reference number, Senders Reference number
BGM+932+11117890’	ECI Write-Off Report, ECI number
GIS+843:120:143’	Write-off report, with errors
DOC+WOF:148:143+1::BM000000002’	Consignment write off Consignment number Bill number
DOC+ERR:148:143+2::BM000000003’	Consignment in error Consignment number Bill number
ERP+1::430’	Country of origin in header
ERC+153::143’	Country of Origin : Invalid
ERP+2:1:304’	Packaging type in line 1 of goods information
ERC+189::143’	Type of Package : Invalid
CNT+10:1’	Total consignments written off
UNT+11+TRN000125’	Transaction Reference number
UNZ+1+IRN000978767’	Interchange Reference number

6.2.4 ECI Received OK

UNA:+.? '	
UNB+UNOA:2+CUSMOD:ZZZ+12345600A:ZZZ+040910:1325+IRN000123456'	Interchange Reference number
UNH+TRN0001+CUSRES:D:98A:UN+SRN00001'	Transaction Reference number, Senders Reference number
BGM+932+98765432'	ECI Write-Off Report, ECI number
GIS+844:120:143'	ECI received OK, no consignments written off
CNT+10:0'	Total consignments written off
UNT+5+TRN0001'	Transaction Reference number
UNZ+1+IRN000123456'	Interchange Reference number

6.2.5 Confirmation of adjustment

UNA:+.?'	
UNB+UNOA:2+CUSMOD:ZZZ+12345600A:ZZZ+040910:1325+IRN000123457'	Interchange Reference number
UNH+TRN0002+CUSRES:D:98A:UN+SRN00002'	Transaction Reference number, Senders Reference number
BGM+965+87654321'	Confirmation of Adjustment ECI number
GIS+830:120:143'	Confirmation of Adjustment Status
UNT+4+TRN0002'	Transaction Reference number
UNZ+1+IRN000123457'	Interchange Reference number

6.2.6 Inspections/Audit Requirements

UNA:+.? '	
UNB+UNOA:2+CUSMOD:ZZZ+12345600A:ZZZ+040910:0300+IRN000123458'	Interchange Reference number
UNH+TRN0003+CUSRES:D:98A:UN+SRN00003'	Transaction Reference number, Senders Reference number
BGM+962+76543210'	Inspections/Audit Requirements, ECI number
FTX+ICN+++PLEASE ARRANGE EXAM CONTACT 09 2565210'	Customs Instructions. Free Text from Customs
GIS+805:120:143'	Customs Instructions
UNT+5+TRN0003'	Transaction Reference number
UNZ+1+IRN000123458'	Interchange Reference number

6.2.7 ECI MAF action required to Port Authority

UNA:+.?'	
UNB+UNOA:2+CUSMOD:ZZZ+ PORTNZAKL:ZZZ+040910:0300+IRN000123459'	Interchange Reference number
UNH+TRN0004+CUSRES:D:98A:UN+SRN00004'	Transaction Reference number, Senders Reference number
BGM+962+65432109:01'	Inspection Audit Requirement, ECI number
TDT+20+V23S+1+++++:::ENDEAVOUR'	Voyage number, Mode of Transport, Craft name
GIS+855:120:143'	MAF Action Required
DOC+25'	Container Release
FTX+QIN+++MAF CLEARANCE GIVEN TO MOVE FROM WHARF TO AN ATF.'	Quarantine Instructions, MAF Action/s required 1
EQD+CN+CONT1111111++++5'	FCL Container 1
DOC+25'	Container Release
FTX+QIN+++MAF EXTERNAL.'	Quarantine Instructions MAF Action/s required 2
EQD+CN+CONT2222222++++4'	Empty Container 2
DOC+25'	Container Release
FTX+QIN+++MAF INTERNAL EXTERNAL.'	Quarantine Instructions MAF Action/s required 3
EQD+CN+CONT3333333++++7'	LCL Container 3
UNT+14+TRN0004'	Transaction Reference number
UNZ+1+IRN000123459'	Interchange Reference number

6.2.8 ECI MAF container cancellation advice to Port Authority

UNA:+.?'	
UNB+UNOA:2+CUSMOD:ZZZ+ PORTNZAKL:ZZZ+040910:0300+IRN000123459'	Interchange Reference number
UNH+TRN0005+CUSRES:D:98A:UN+SRN0005'	Transaction Reference number, Senders Reference number
BGM+932+54321098:01'	Delivery Order, ECI number
TDT+20+V23S+1+++++:::ENDEAVOUR'	Voyage number, Craft name
GIS+857:120:143'	Container cancellation advice
DOC+25'	Container Release
EQD+CN+CONT1111111++++5'	FCL Container 1
UNT+7+TRN0005'	Transaction Reference number
UNZ+1+IRN000123459'	Interchange Reference number

6.2.9 ECI MAF action required to Originator

UNA:+.?'	
UNB+UNOA:2+CUSMOD:ZZZ+99999900B:ZZZ+20040517:0300+IRN000123460'	Interchange Reference number
UNH+TRN0006+CUSRES:D:96B:UN+SRN0006'	Transaction Reference number, Senders Reference number
BGM+962+43210987'	Inspection Audit Requirement
GIS+856:120:143'	MAF Instructions to Originator
DOC+MAF:118:143+1::BM00000000001'	Consignment requiring MAF Action 1
FTX+QIN+++MAF EXTERNAL.'	Quarantine Instructions MAF Action/s required 1
DOC+MAF:118:143+2::BM00000000002'	Consignment requiring MAF Action 2
FTX+QIN+++MAF INTERNAL.'	Quarantine Instructions MAF Action/s required 2
DOC+MAF:118:143+3::BM00000000003'	Consignment requiring MAF Action 3
FTX+QIN+++MAF CLEARANCE GIVEN TO MOVE FROM WHARF TO AN ATF.'	Quarantine Instructions MAF Action/s required 3
UNT+10+TRN0006'	Transaction Reference number
UNZ+1+IRN000123460'	Interchange Reference number

6.2.10 ECI Container release to Port Authority

UNA:+.? '	
UNB+UNOA:2+CUSMOD:ZZZ+ PORTNZAKL:ZZZ+040910:0300+IRN000123461'	Interchange Reference number
UNH+TRN0007+CUSRES:D:98A:UN+SRN0007'	Transaction Reference number, Senders Reference number
BGM+932+54321098:01'	Delivery Order, ECI number
TDT+20+V23S+1+++++:::ENDEAVOUR'	Voyage number, Craft name
GIS+846:120:143'	Export Container Release
DOC+25'	Container Release
EQD+CN+CONT1111111++++5'	FCL Container 1
UNT+7+TRN0007'	Transaction Reference number
UNZ+1+IRN000123461'	Interchange Reference number