



SES Transport Operator Checks

Transporter operators play a critical role in maintaining the integrity and security of the Secure Exports Scheme (SES) supply chain. This short guide outlines the essential checks that must be carried out when uplifting and delivering an SES container to ensure that it remains secure, compliant, and free from tampering throughout the journey. If a container is being stored overnight (hubbing) then there are additional checks to be completed.

It is essential that drivers are familiar with the SES Minimum Standards for Transport Operators (available on the Customs website).

Uplifting the container from a SES Secure Load Site

When drivers pick up a SES container, they must complete these checks.

- ✓ Ensure that the container they are transporting matches the paperwork you have.
- ✓ Ensure all container numbers and markings are intact and match the paperwork you have.
- ✓ Check that the seal has been correctly applied. Seal checks can be remembered using the acronym V.V.T.T. — **View & Verify, Tug & Twist.**
- ✓ They will need to sign documentation confirming that you have undertaken the V.V.T.T. check and record the date and time of collection. At some SES Secure Load Sites, this can be done electronically.

Additional

- ✓ Some SES Secure Load Sites may require drivers to perform one or more of the 7/8-point container inspection. If completed by your driver, these checks need to be documented by the Secure Load Site. Example: the underside inspection of the container.

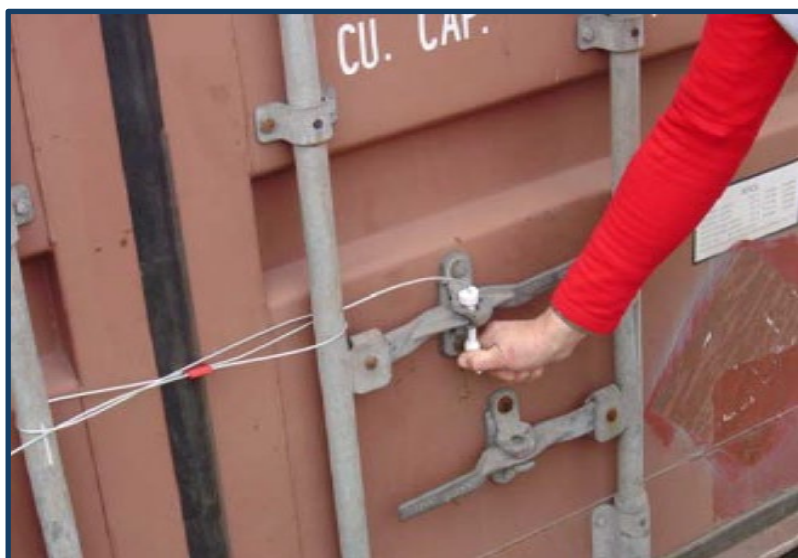


View & Verify, Tug & Twist

View and Verify — Look at the container and seal number and confirm that the information matches what is recorded in your documentation.



Tug and Twist — Pull the cable block and twist/turn the bolt. Physically check the seal to ensure that it has been fastened tightly and is intact.





On the journey

If the journey includes stops, or is interrupted, drivers must complete these checks.

- ✓ Complete a visual check of the container seal at every stop and upon returning to the vehicle. A record of each check must be maintained.
- ✓ Where a container is handed over to another driver, a V.V.T.T. check must be completed. The date and time of the handover, along with the name of the receiving driver, must be recorded.
- ✓ Ensure dispatchers are notified of any changes to the planned route.

On delivery

When the driver arrives at the port or railhead, they must complete these checks.

- ✓ Complete a final visual check of the seal. If the seal is missing, damaged, or has been changed, drivers must immediately inform the SES team via their dispatcher.
- ✓ Record the date and time of delivery and obtain a signature from the person receiving the container (electronic confirmation is acceptable).

Overnight or extended storage (hubbing)

If the sealed container must be stored overnight or for an extended period, it must be at a SES approved storage site.

- ✓ A visual check must be conducted to confirm the seal remains intact, at least once daily.
- ✓ Immediately prior to removing the container from the storage facility, a V.V.T.T. check must be completed.
- ✓ Agreed reporting procedures must be followed if any suspicious activity is identified, including unauthorised persons in the storage area or any damage to the container or seal.



Contingency Plans

Seal & container tampering / damage

If, at any time, it is identified that the SES seal has been damaged or there are any suspicious changes to the container, the following actions must be taken:

- ✓ The dispatcher must be notified immediately. The seal must not be removed, replaced, or disposed of until further instructions are received.
- ✓ Agreed reporting procedures must be followed.

Breakdowns or disruptions

In the event of a breakdown or disruption en route, the following actions must be taken:

- ✓ The dispatcher must be notified immediately.
- ✓ Where the truck is repaired at the breakdown location, or a replacement truck is provided, a V.V.T.T. check must be completed prior to continuing the journey.
- ✓ If the container is transferred to another truck at the breakdown location, a V.V.T.T. check must be completed prior to continuing the journey.
- ✓ If the container is returned to the load site, all required checks must be completed again by the next transport operator or driver.

Where a container that was intended to be transported in a single trip must unexpectedly be stored overnight, **it must be placed at an SES-approved storage site.**